

Regional Office of Education #1

Annual Report



Serving Adams, Brown, Cass, Morgan, Pike, and Scott Counties

Dear Friends,

I'm inspired by the words of Admiral Jim Stockdale, which became the foundation of what is now known as the Stockdale Paradox. The Stockdale Paradox calls us to hold on to an unwavering faith while managing the realities we are confronted with. The reality is, the pandemic has impacted the lives of our children, schools, and families irrevocably. There is no escaping the fact that the measures we have to take to minimize the spread of the virus has made our jobs to care for the hearts, minds, and spirits of the children in our care harder than ever.

In spite of the reality we are facing, I am unwavering in my belief that we will prevail in the end. I know the love our teachers have for their students, and that love drives unimaginable innovation and creativity. I also know that children are resilient by design. This resilience allows them to quickly normalize the unimaginable and still look for joy in their everyday lives.

I am heartened by the remarkable passion our educational community has demonstrated in order to bring our students back into our buildings and our care. Not one school staff member returned to school this year without innovating and changing the way they operate to help make our schools as safe as they can be.

As we look to the future, we will continue to support the educational community so they can show up for their students. We will do this by adapting to meet district and educators needs. A few ways we've already done this is by completely redesigning our summer professional development programming to be remote and responsive to the ever-changing educational environment, and by assisting district leaders in the interpretation and dissemination of critical information needed to respond to the COVID-19 pandemic.

This annual report provides a quick overview of the Regional Office of Education #1 purpose, the services we provide, and our fiscal management. We are challenging ourselves to think outside of the box and be flexible, responsive and innovative as we move forward. Throughout the year, we've surveyed educators and district leaders- and this information is driving our priorities for the upcoming year (for a summary of the results, see pages 8-9). Our virtual offerings will include high quality, evidence based programming around trauma responsive teaching, in addition to continued high demand technical training for virtual learning. We will continue to support district leaders by staying informed on best practices and representing their voice at the state level. We know this advocacy is needed more than ever so our districts can stay focused on their schools.

We look forward to continuing to partner with the dedicated teachers, administrators, and community leaders in our region to bring resources and expertise to our community.

With Gratitude,
Jill Reis



“ You must never confuse faith that you will prevail in the end- which you can never afford to lose- with the discipline to confront the most brutal facts of your current reality, whatever they might be. ”

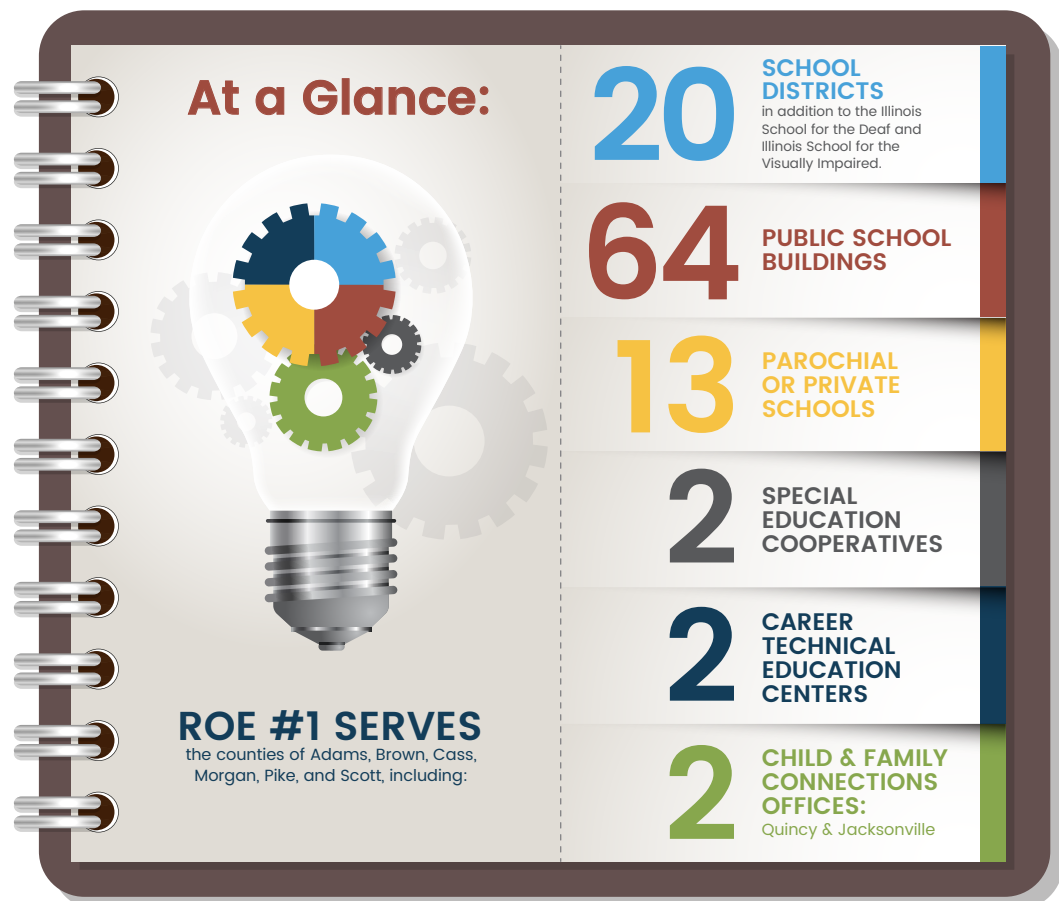
-Admiral Jim Stockdale

Organization Identity

What We Do

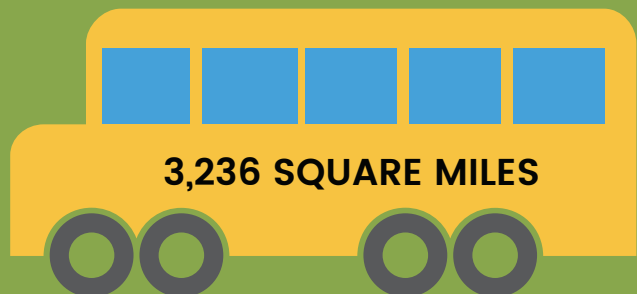
The Regional Office of Education #1 (ROE#1) is an essential support office partnering with the Illinois State Board of Education (ISBE) to support local school districts. ROE#1 provides positive leadership and serves as a source of information for educators, school districts, and the public. We keep students and school buildings safe, handle legal issues such as consolidations, and ensure education in the classroom meets state standards. We work together with our schools to provide the best education possible for students in West Central Illinois.

Working collaboratively with the County Boards, the Regional Superintendent works throughout the region to ensure that all children receive an education in a safe, supportive, and successful environment. The Regional Superintendent of Schools is elected by their counties to serve as the chief administrative officer of the region. ROE#1 has a board whose purpose is to oversee and make decisions regarding school district boundary changes through an annexation and detachment process.



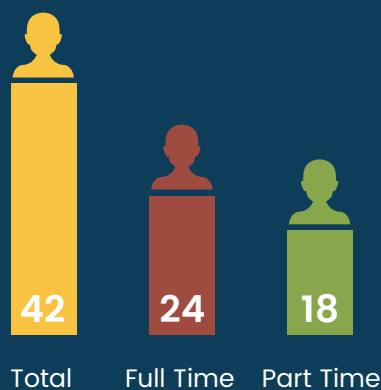


ROE#1 IS THE FOURTH LARGEST
Regional Office of Education in geographic size
out of 35 Regional Offices in Illinois covering...



ROE#1 OPERATES

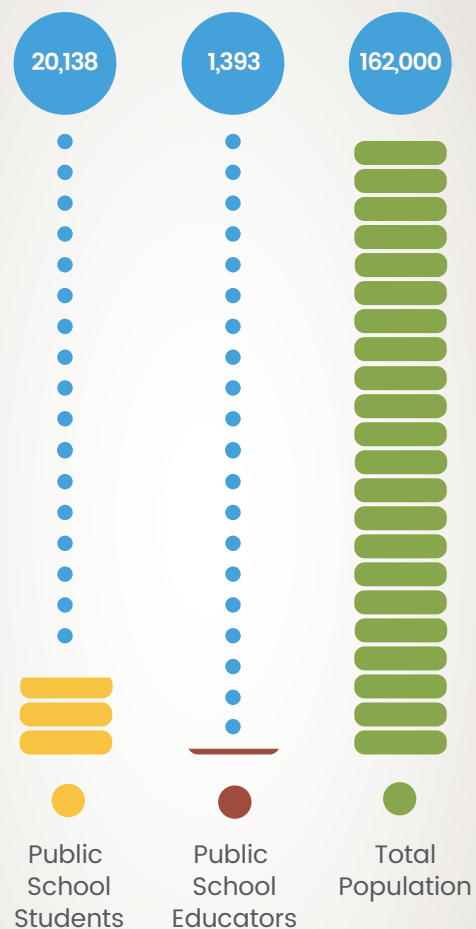
four office sites throughout Illinois, located in Quincy, Jacksonville, Pittsfield, and Virginia, and employs...



ROE#1 OVERSEES

operations for four Regional Safe Schools in Illinois, located in Quincy (2), Pittsfield, and Jacksonville

ROE#1 SERVES



3
State Representatives

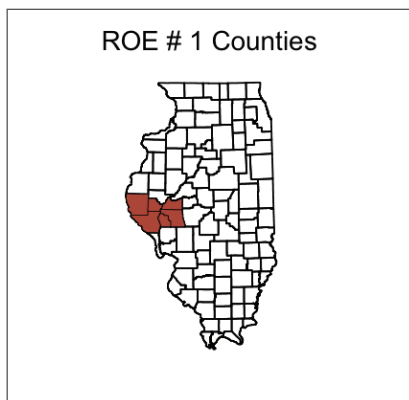
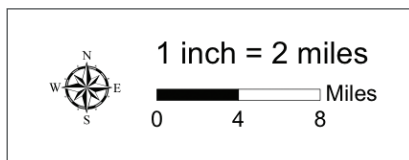
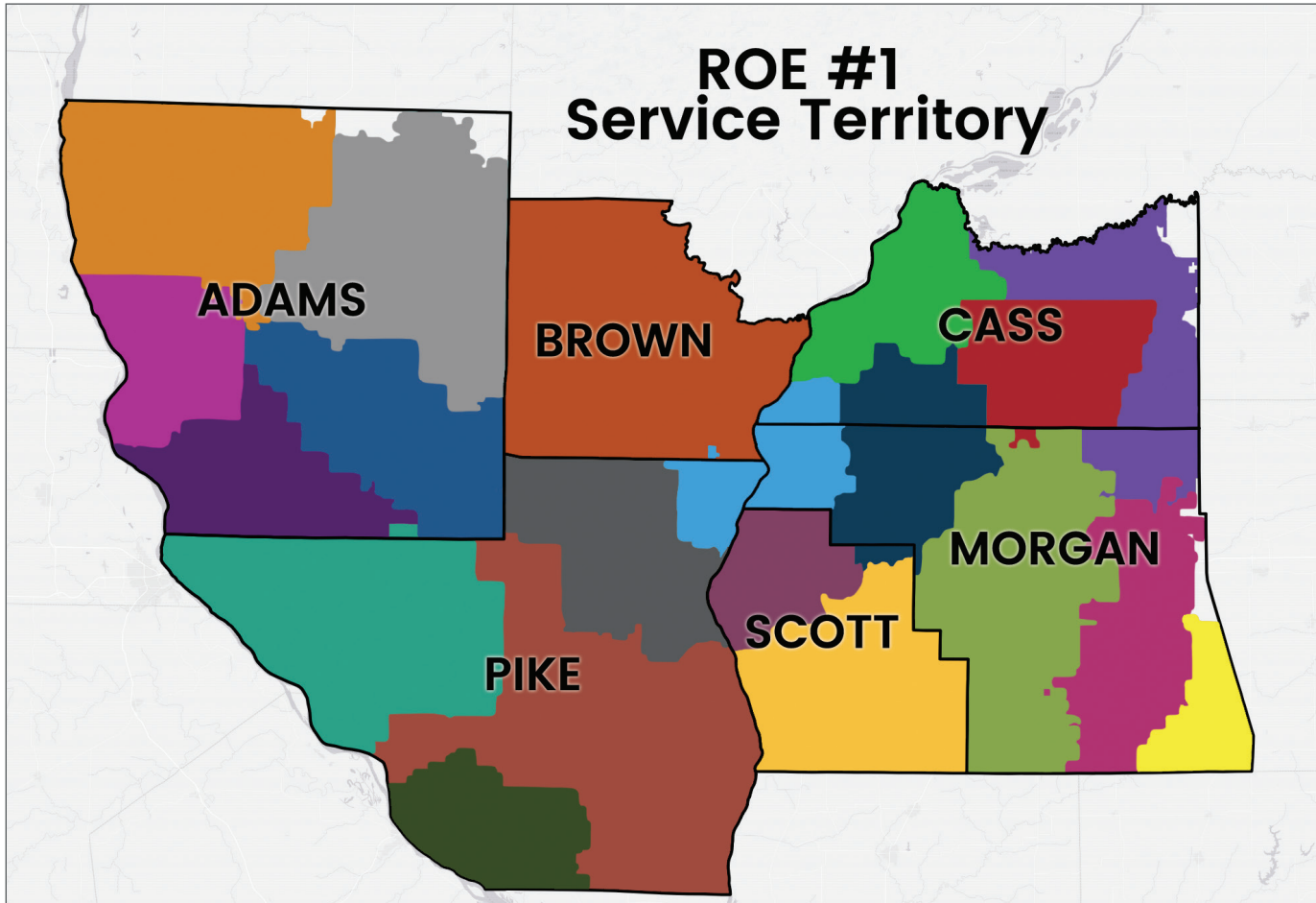
2
State Senators

1
United States Senator

1
Congressman



Service Territory



Legend

• Places

County Boundaries

School District

- A-C Central Community Unit School District 262
- Beardstown Community Unit School District 15
- Brown County Community Unit School District 1
- Camp Point Community Unit School District 3
- Community Unit School District 4
- Franklin Community Unit School District 1
- Griggsville-Perry Community Unit School District 4
- Jacksonville School District 117
- Liberty Community Unit School District 2
- Meredosia-Chambersburg Community Unit School District 11
- Payson Community Unit School District 1
- Pikeland Community Unit School District 10
- Pleasant Hill Community Unit School District 3
- Quincy School District 172
- Scott-Morgan Consolidated Unit School District 2
- Triopia Community Unit School District 27
- Virginia Community Unit School District 64
- Waverly Community Unit School District 6
- Western Community Unit School District 12
- Winchester Community Unit School District 1

Programs & Services

The Regional Superintendent acts as an advocate for education by providing positive leadership and disseminating information for educators, school districts and the public. As part of its partnership with the Illinois State Board of Education, ROE#1 performs regulatory functions as directed by the Illinois School Code to provide safety, support, and success to local school districts.

Safety

Safety is a premier objective of ROE#1. We support the safety in our schools by providing these shared services.

Health Life Safety

We inspect each of our region's 67 public school and school-related buildings annually to ensure they meet health and safety standards under state law. When schools remodel or build new buildings, or use temporary classroom units, we are there to ensure adherence to safety protocols for students and teachers.

Bus Safety

Our bus safety training is required for all new drivers before they get behind the wheel, and for any drivers renewing their permits each year. We keep students safe to and from school through an eight-hour course for new drivers and two-hour refresher course for those who already have been on the roads.

Background Checks

School children must be protected in the classroom. Our offices make sure every educator is fingerprinted and has a background check before they ever enter the classroom.

In FY20 ROE#1

- Inspected 67 public school buildings and issued 17 building permits
- Trained 51 first-time bus drivers and provided a refresher course for 390 current bus drivers
- Fingerprinted 601 Educators



Educators
Fingerprinted



Support

Support of our schools is one way we work collaboratively with our districts, schools, parents, and communities.

Licensure

Our offices make sure teachers are ready for the classroom. We issue, register, and monitor educator licenses for teachers, administrators, substitutes, and paraprofessionals. Every educator in a school can work with a ROE#1 member to renew their credentials.

Professional Development

ROE#1 is a provider of high quality professional development throughout the region. Our staff works tirelessly to provide educator trainings, conferences, networking opportunities, and assistance throughout the year to enhance skills and provide support for continuous school improvement. Our professional development emphasis keeps teachers up-to-date with instructional best practices and offers a collaborative partnership to problem solve and meet students' needs within the classroom.

Compliance

Schools work with our offices to ensure they are meeting state and federal guidelines and standards. Our systematic review results are part of the Illinois Report Card, and they serve to improve operations and support top-quality programs for student educational experiences.



Educators Registered

In FY20 ROE#1

- Registered 1,350 educators, 1,368 educator licenses, and 482 substitute licenses
- Held 111 professional development sessions for 2,623 educators
- Held seven workshops for 73 administrators through the Administrator Academy
- Evaluated five districts for compliance, and 15 districts for mini-compliance

Success

Success is our goal for all students, in all schools, in all districts, for our entire region.

High School Equivalency

For students who do not complete high school, an alternative path is available through the GED or High School Equivalency Certificate. Individuals pursuing their GED can take coursework at John Wood Community College or Lincoln Land Community College and complete their testing at the ROE#1 testing center. We issue certificates to those individuals who successfully pass their exam.

Safe School Programs

Students who are suspended/expelled from their schools can receive needed support through our Safe School programs. We meet the specific needs of disruptive students by providing individual attention in alternative learning environments that turn around many lives each school year.

School Recognition

Schools must submit their calendar, show their assessment and instruction plans, and meet ISBE Quality Assurance guidelines to receive recognition and approval through ROE#1 each year. We make visits to schools throughout the year to ensure they are providing the education called for under state law.

Truancy Support

Student attendance has a dramatic effect on a child's academic career. We have created a highly effective intervention program to address compulsory school attendance laws in Illinois and help children and families experiencing chronic truancy.

In FY20, ROE#1

- Administered 201 GED exams for 165 unique testers
- Served 2,742 students through S.A.F.E Schools in Adams County
- Provided a Regional Safe School for 160 Students
- Taught 602 students (seven schools) evidence-based substance abuse prevention curriculum
- Supported 368 chronically truant children and their families and held 45 truancy hearings
- Supported 380 students experiencing homelessness



380

Homeless Students
Supported



Value Add

In addition to regulatory functions, ROE #1 provides early intervention, early literacy and leadership development enrichment programs for the region. These additional value add programs include *Ready, Set, Grow!* – an early literacy initiative, *Team LEAD* and the *West Central Illinois School Leadership Initiative* – both focused on School Leadership, and *Leaders for Life* – a student and staff leadership initiative. We also serve as a sponsor and partner for the *Quincy Conference*, a regional educational conference.

In FY20, ROE#1

- Received 305 referrals for early intervention support for children birth-three
- Served 68 educators in the West Central Illinois Leadership Initiative, collectively impacting 11,768 students
- Interacted with 5,761 children and their families through *Ready, Set, Grow!* and distributed 7,235 books
- Served 1,960 educators from 37 districts at the 2019 Quincy Conference
- Served 524 testers at testing centers for a range of certification and licensure exams across industries



5,761

Interactions Through
Ready, Set, Grow!



Regional Needs



District and Superintendent Needs

ROE#1 Superintendents were recently invited to reflect on their needs and how they have evolved over the years. Their feedback is summarized below. The challenges our Superintendents are facing, and the needs they identified, are at the heart of our priorities for the upcoming year.

District Challenges and Needs

- **Crisis Management** during COVID has overridden all other priorities for the district
- **Public perception** of educators in general has declined and the need for active communication on social media has increased
- Expanded requirements for data and accountability, and **constantly changing regulations**, have increased the workload for employees across the district
- National **teacher shortage** has presented a challenge in attracting and retaining qualified teachers
- Districts are experiencing an increased need for **social emotional learning** in schools, and a need to address their ability to address emotional and mental health issues
- Districts are experiencing an increased need for technology based education and online instruction

Top Superintendent Needs

- **Guidance** on ISBE driven issues, financial matters and grant writing and oversight
- **Professional Development, coaching or mentoring** for Superintendents on topics such as time management, collaboration with other superintendents, internal processes, and training for difficult conversations
- Curriculum and Instructional **Design Support**
- **Support recruiting and retaining** qualified teachers
- **Strong communication** of state information and mandates, and advocacy and voice on behalf of districts



Educator Needs

ROE#1 distributed a Professional Development Survey to all regional educators in the Spring of 2020. Four-hundred and twenty-six respondents identified the following professional development priorities:

- 38% Social Emotional Learning
- 26% Instructional Strategies
- 25% Classroom Management
- 24% Special Education
- 24% Instructional Technology
- 23% Trauma

38%

Social Emotional Learning

26%

Instructional Strategies

25%

Classroom Management

24%

Special Education

24%

Instructional Technology

23%

Trauma

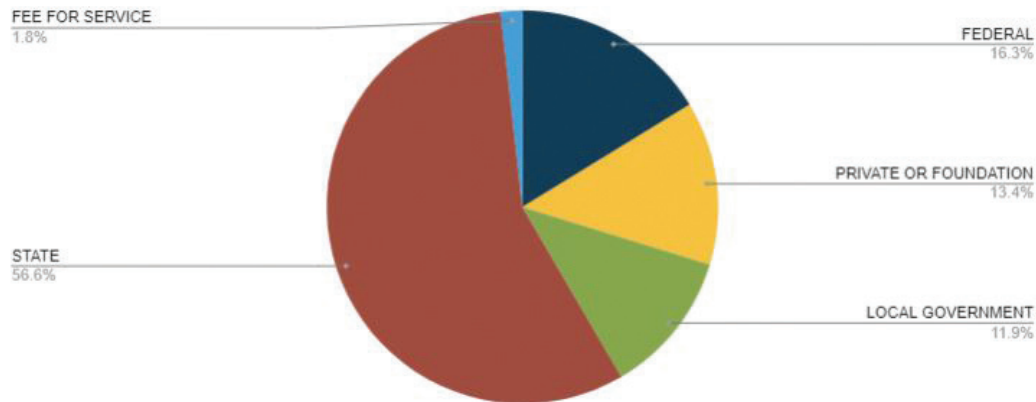
Financials

Program	Budget Amount	Funding Source
EIR 10/1/19-9/30/20	\$83,000.00	federal
SEED 10/1/19-9/30/20	\$481,992.00	federal
Ready Set Grow - Adams County	\$17,650.00	private / foundation
Ready Set Grow - Expanded	\$8,000.00	private / foundation
Tracy-Ready Set Grow	\$55,000.00	private / foundation
Stone Foundation	\$1,200.00	private / foundation
Tracy-Partners to Lead	\$30,000.00	private / foundation
Tracy-Quincy Conference	\$30,000.00	private / foundation
Tracy-NISL-Cohort IV	\$130,425.00	private / foundation
Tracy-NISL-Cohort V	\$130,425.00	private / foundation
Tracy-NISL-Cohort VI	\$61,425.00	private / foundation
Community Foundation	\$2,500.00	private / foundation
General State Aid	\$866,185.91	state
Child and Family Connections	\$509,526.00	state
State Free Lunch & Breakfast--Reimb. Only	\$577.80	state
Title II-Teacher Quality-Leadership Grant	\$1,764.00	state
Homeless	\$29,421.00	state
Truants' Alternative and Optional Education Program	\$183,429.00	state
Regional Safe School Program	\$79,992.00	state
ROE/ISC Operations	\$125,342.00	state
RSSP Cooperative Education Program	\$40,076.00	state
National School Lunch 9/1/19--9/30/20--Reimb. Only	\$23,628.54	state
School Breakfast Program 9/1/19--9/30/20--Reimb. Only	\$7,442.55	state
ROPES	\$86,636.00	state
SAFE Program	\$10,000.00	state
SAFE Program	\$40,000.00	local government
Dental Sealant Grant	\$9,700.00	state
County Support	\$362,050.00	local government
Testing Center	\$8,803.13	fee for service
Institute	\$40,282.76	state
Fingerprinting	\$12,200.44	fee for service
Bus Driver Training	\$1,503.00	fee for service
TOTAL ORGANIZATIONAL BUDGET	\$3,470,177.13	

FY 20 Organizational Budget

(July 1, 2019 – June 30, 2020 unless noted)

FY20 Revenue Distribution



Funding Sources/Types

State Funding for direct delivery of the following mandated programs/ services on behalf of the state:

- Health, Life and Safety Services
- Compliance
- Administrators Academy
- Professional Development
- McKinney-Vento Homeless Services

*County Funding for direct delivery of the following mandated services on behalf of the counties:

- Fingerprinting
- Testing center
- Licensure services
- Bus driver training
- GED
- Workers permit
- Homeschool Registrations



Statutory Grant Funded Programs

- Regional Safe Schools - Cooperative Education Program (Adams, Pike) (state)
- Regional Safe Schools (Adams, Brown, Cass, Morgan, Scott, Pike) (state)
- Truant Services - Instructional: Lafayette (state)
- Truancy Services - Intervention (state)
- Lunch and Breakfast Program (state funding/flowthrough)

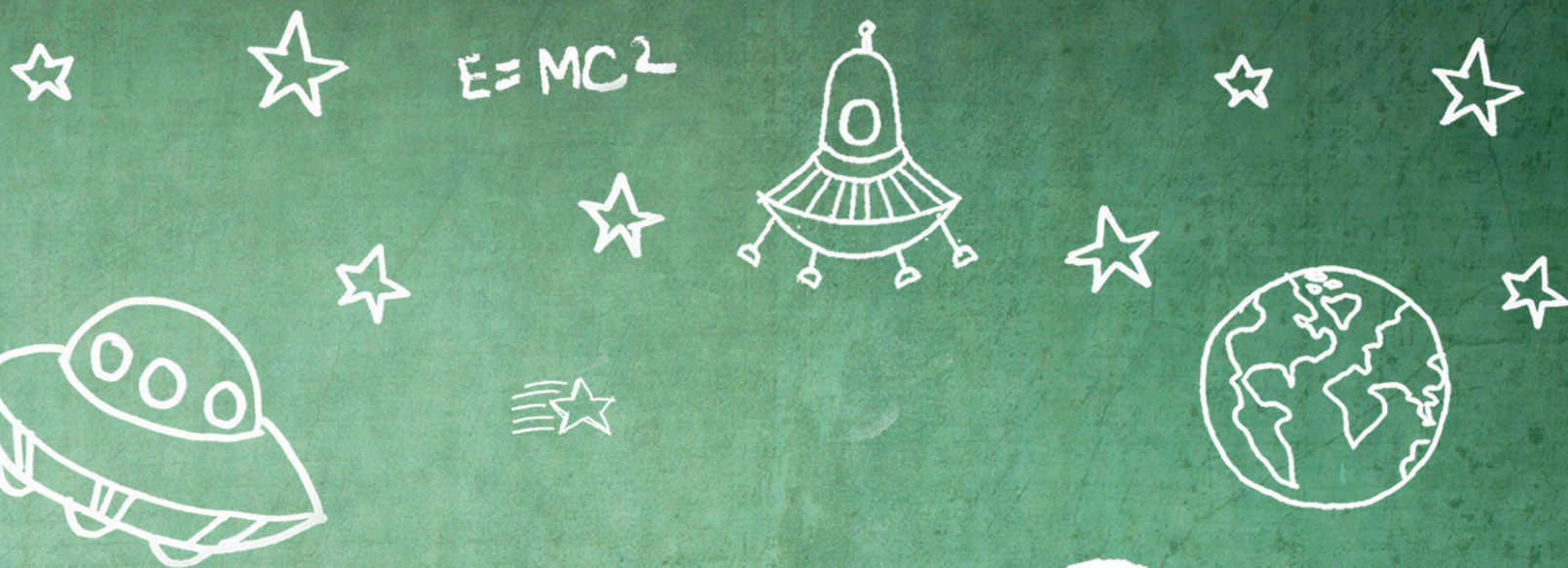


Non-Statutory Grant Funded Programs (value-add)

- Federally funded
 - SEED-Team LEAD (federal research grant)
 - EIR-Team LEAD (federal research grant)
- State funded
 - Child and Family Connections (CFC) (DHS)
 - Regional Office Prevention Education Services (ROPES) (DHS)
 - Workforce Development
 - Title II Educator Evaluation
- County funded
 - S.A.F.E. Schools-Adams County
 - Dental Sealant Program - Morgan County
- Foundation funded
 - Leaders for Life
 - Quincy Conference
 - West Central Illinois School Leadership Initiative
 - Ready, Set, Grow!

*County funds also provide indirect support for the following programs:

- Health, Life and Safety
- Compliance
- Professional Development
- Administrators Academy
- Truancy Services Intervention



“

Success is our goal
for all students,
in all schools,
in all districts,
for our entire region.

–ROE #1

”



Office Locations

Quincy

Regional Office of Education
507 Vermont, Ste. 104
Quincy, IL 62301
Phone: 217.277.2080
Fax: 217.277.2092

Jacksonville

Regional Office of Education
110 N West Street
Jacksonville, IL 62650
Phone: 217.243.1804
Fax: 217.243.5354

Pittsfield

Regional Office of Education
39637 260th Avenue
Pittsfield, IL 62323
Phone: 217.285.5319
Fax: 1.217.285.6696

Virginia

Regional Office of Education
651 South Morgan, Rm 119
Virginia, IL 62691
Phone: 217.452.7329

Trustees

Name	County	Term Expires
Gerald Robbins	Adams	2023
Gary Brickman	Adams	2021
Van Wilson	Brown	2023
Drew Carls	Cass	2023
Keith R. Lape	Morgan	2021
Delbert Scranton	Pike	2025
	Scott	2025



Regional Board
of School Trustees



Serving Adams, Brown, Cass, Morgan, Pike, and Scott Counties