

# Regional Office of Education #1

## Annual Report FY21



*Serving Adams, Brown, Cass, Morgan, Pike, and Scott Counties*



# Dear Friends,

For six years now, it has been my honor to serve as Regional Superintendent of Schools for this region. This past year has been another unpredictable one as we continued to navigate the COVID-19 pandemic. I am amazed by the dedication of our educators in keeping our schools safe and our students learning. The strength and innovation in our region has truly been remarkable. I am thankful to be part of this committed team and am grateful to be serving our students, their families, and this community.

Our approach, this past year, was focused on educating our students during these everchanging and challenging times. Adversity was faced in many aspects of district and school policy and procedure. In an effort to help, we surveyed school staff, educators, and administrators to gain awareness of their highest demands. We shifted our professional learning opportunities to virtual platforms and focused our topics on instructional technology, social emotional learning, and trauma needs. For superintendents, we gathered via video conferencing to stay current on legislative updates and to problem solve for practical solutions. All of our offerings were provided as a resource for schools and districts to build upon as they navigated through the uncharted waters.

This annual report gives a quick overview of the Regional Office of Education #1 for July 2020–June 2021. It gives insight into our purpose, programs, and services, as well as summarizes the greatest needs of our educators, principals, and superintendents. The report also describes our performance on regulatory functions as directed by Illinois School code. The information is compiled to highlight our efforts in fostering safety, support, and success in our schools.

We continue to strive for excellence during these transitional times. Our hope is to provide the highest level of support for all educational endeavors. We look forward to maintaining our current partnerships and developing new ones to bring resources and expertise to our area. Lastly, our appreciation is endless for everyone helping us further execute our mission and focus on our priority – our children.

*Sincerely,*  
Jill Reis



“ We are born makers. We move what we’re learning from our heads to our hearts through our hands. ”

–Brené Brown

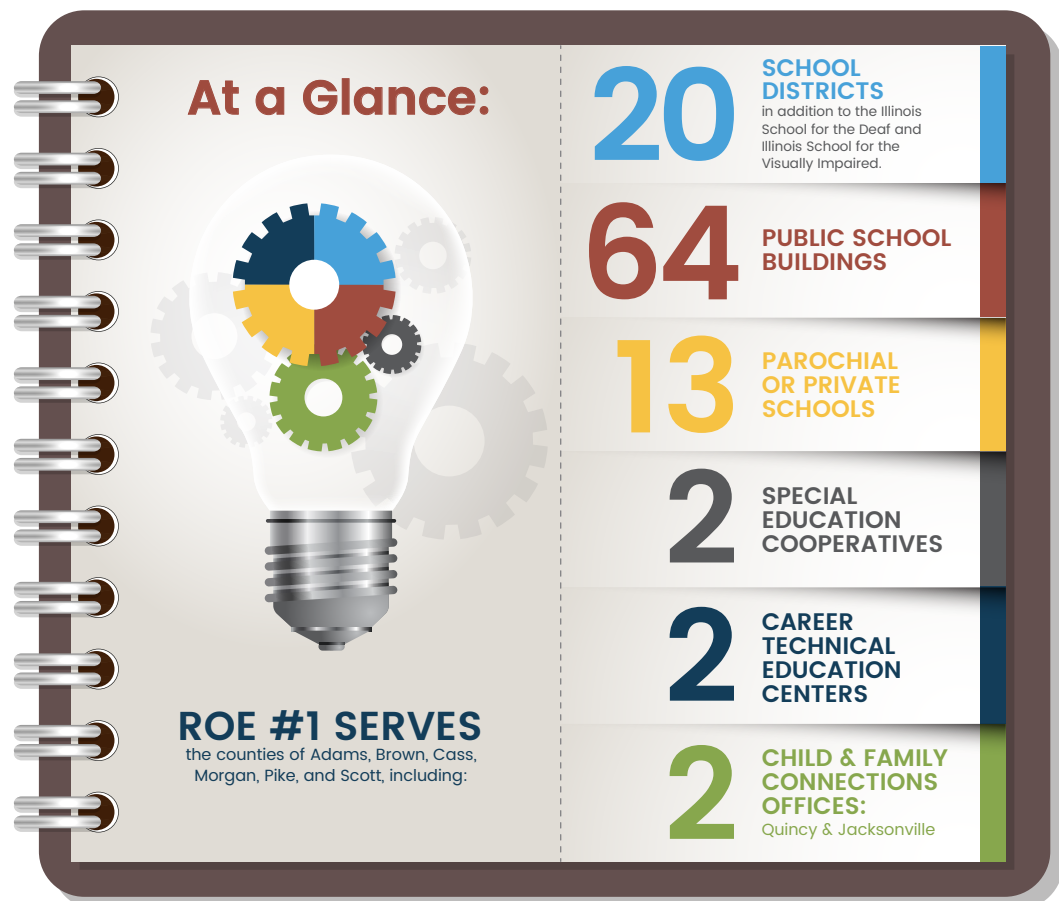


# Organization Identity

## What We Do

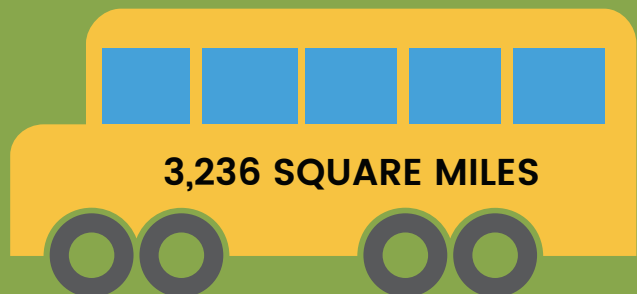
The Regional Office of Education #1 (ROE#1) is an essential support office partnering with the Illinois State Board of Education (ISBE) to support local school districts. ROE#1 provides positive leadership and serves as a source of information for educators, school districts, and the public. We keep students and school buildings safe, handle legal issues such as consolidations, and ensure education in the classroom meets state standards. We work together with our schools to provide the best education possible for students in West Central Illinois.

Working collaboratively with the County Boards, the Regional Superintendent works throughout the region to ensure that all children receive an education in a safe, supportive, and successful environment. The Regional Superintendent of Schools is elected by their counties to serve as the chief administrative officer of the region. ROE#1 has a board whose purpose is to oversee and make decisions regarding school district boundary changes through an annexation and detachment process.



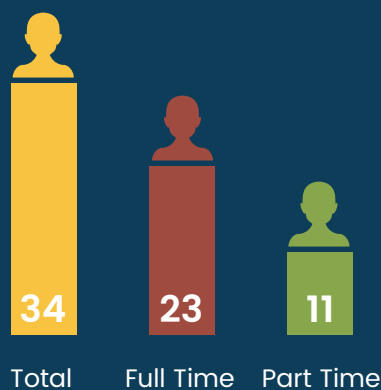


**ROE#1 IS THE FOURTH LARGEST**  
Regional Office of Education in geographic size  
out of 35 Regional Offices in Illinois covering...



### ROE#1 OPERATES

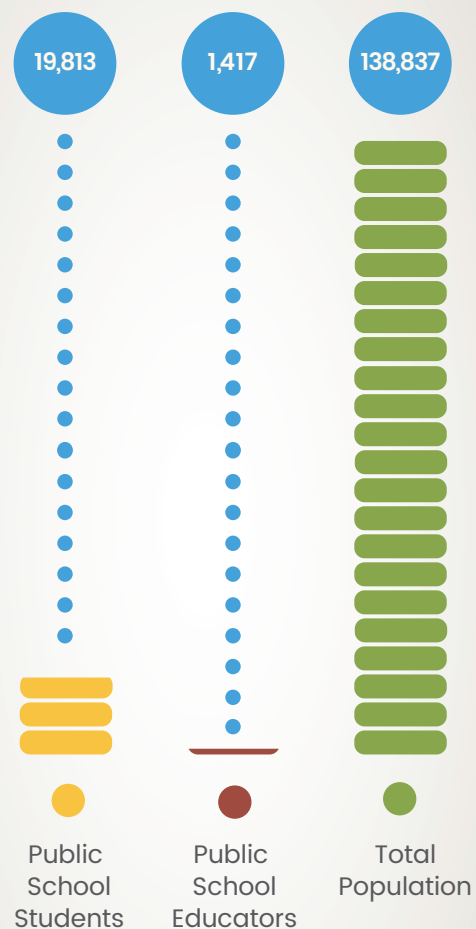
four office sites throughout Illinois, located in Quincy, Jacksonville, Pittsfield, and Virginia, and employs...



### ROE#1 OVERSEES

operations for four Regional Safe Schools in Illinois, located in Quincy (2), Pittsfield, and Jacksonville

### ROE#1 SERVES



**3**  
State Representatives

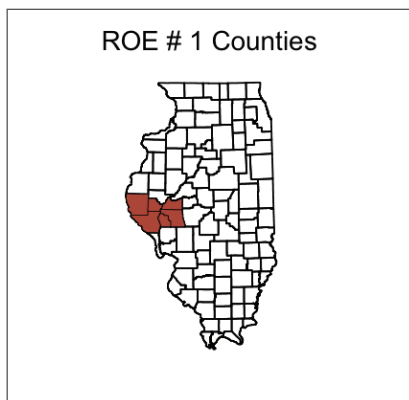
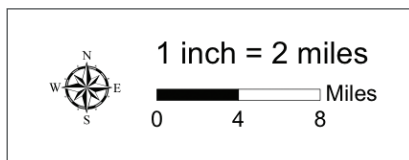
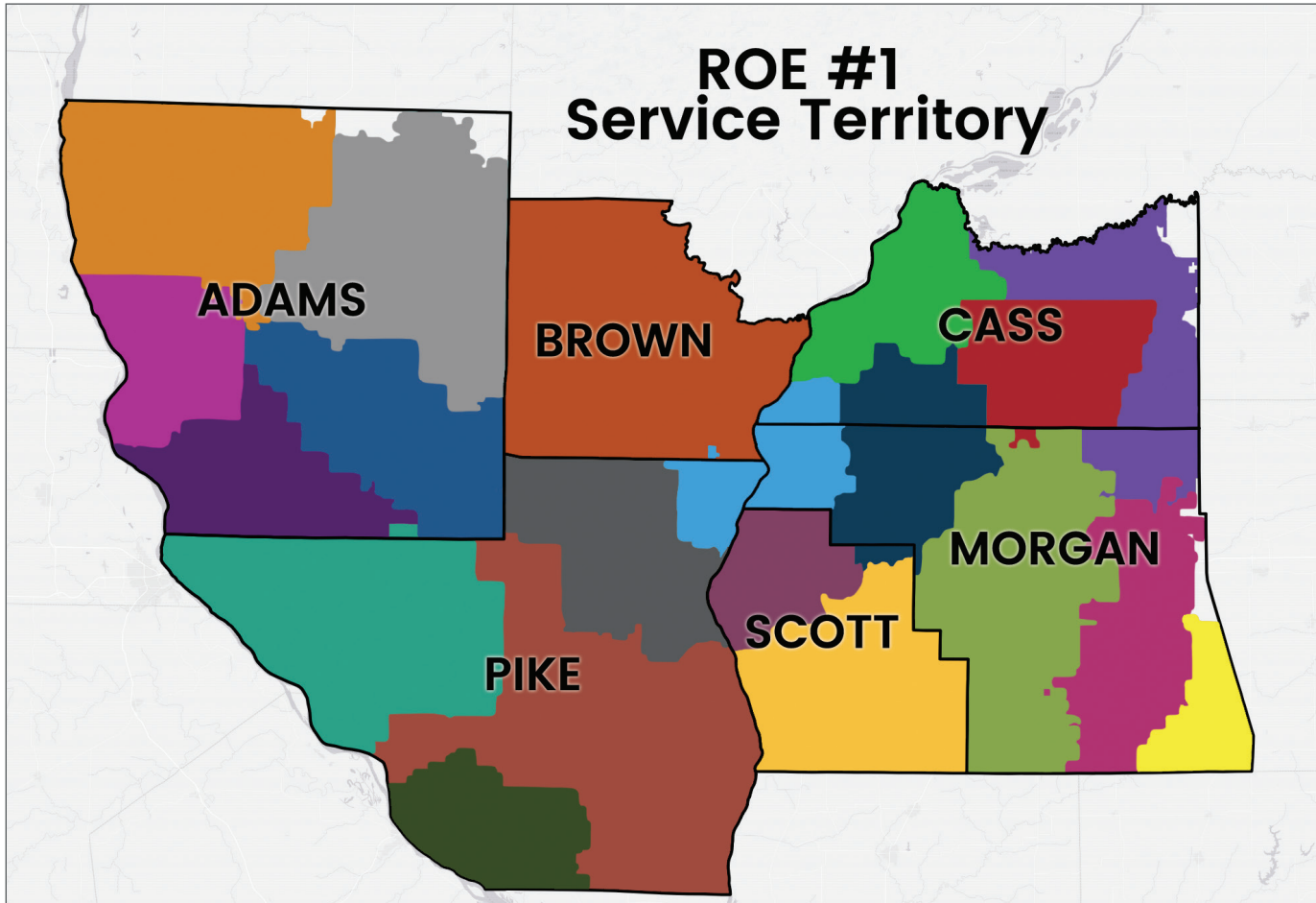
**2**  
State Senators

**1**  
United States Senator

**1**  
Congressman



# Service Territory



## Legend

• Places

County Boundaries

### School District

- A-C Central Community Unit School District 262
- Beardstown Community Unit School District 15
- Brown County Community Unit School District 1
- Camp Point Community Unit School District 3
- Community Unit School District 4
- Franklin Community Unit School District 1
- Griggsville-Perry Community Unit School District 4
- Jacksonville School District 117
- Liberty Community Unit School District 2
- Meredosia-Chambersburg Community Unit School District 11
- Payson Community Unit School District 1
- Pikeland Community Unit School District 10
- Pleasant Hill Community Unit School District 3
- Quincy School District 172
- Scott-Morgan Consolidated Unit School District 2
- Triopia Community Unit School District 27
- Virginia Community Unit School District 64
- Waverly Community Unit School District 6
- Western Community Unit School District 12
- Winchester Community Unit School District 1

# Programs & Services

The Regional Superintendent acts as an advocate for education by providing positive leadership and disseminating information for educators, school districts and the public. As part of its partnership with the Illinois State Board of Education, ROE#1 performs regulatory functions as directed by the Illinois School Code to provide safety, support, and success to local school districts.

## Safety

Safety is a premier objective of ROE#1. We support the safety in our schools by providing these shared services.

### Health Life Safety

We inspect each of our region's 67 public school and school-related buildings annually to ensure they meet health and safety standards under state law. When schools remodel or build new buildings, or use temporary classroom units, we are there to ensure adherence to safety protocols for students and teachers.

### Bus Safety

Our bus safety training is required for all new drivers before they get behind the wheel, and for any drivers renewing their permits each year. We keep students safe to and from school through an eight-hour course for new drivers and two-hour refresher course for those who already have been on the roads.

### Background Checks

School children must be protected in the classroom. Our offices make sure every educator is fingerprinted and has a background check before they ever enter the classroom.

### In FY21 ROE#1

- Inspected 67 public school buildings and issued 15 building permits
- Trained 41 first-time bus drivers and provided a refresher course for 407 current bus drivers
- Fingerprinted 665 Educators



Educators  
Fingerprinted



## Support

Support of our schools is one way we work collaboratively with our districts, schools, parents, and communities.

## Licensure

Our offices make sure teachers are ready for the classroom. We issue, register, and monitor educator licenses for teachers, administrators, substitutes, and paraprofessionals. Every educator in a school can work with a ROE#1 member to renew their credentials.

## Professional Development

ROE#1 is a provider of high quality professional development throughout the region. Our staff works tirelessly to provide educator trainings, conferences, networking opportunities, and assistance throughout the year to enhance skills and provide support for continuous school improvement. Our professional development emphasis keeps teachers up-to-date with instructional best practices and offers a collaborative partnership to problem solve and meet students' needs within the classroom.

## Compliance

Schools work with our offices to ensure they are meeting state and federal guidelines and standards. Our systematic review results are part of the Illinois Report Card, and they serve to improve operations and support top-quality programs for student educational experiences.

3,665

Educators Registered

## In FY21 ROE#1

- 2,898 active PEL, 767 active para licenses registered
- 137 new substitute licenses issued
- Held 51 professional development sessions for 585 educators
- Held six workshops for 33 administrators through the Administrator Academy
- Evaluated five districts for compliance, and 15 districts for mini-compliance

## Success

Success is our goal for all students, in all schools, in all districts, for our entire region.

## High School Equivalency

For students who do not complete high school, an alternative path is available through the GED or High School Equivalency Certificate. Individuals pursuing their GED can take coursework at John Wood Community College or Lincoln Land Community College and complete their testing at the ROE#1 testing center. We issue certificates to those individuals who successfully pass their exam.

## Safe School Programs

Students who are suspended/expelled from their schools can receive needed support through our Safe School programs. We meet the specific needs of disruptive students by providing individual attention in alternative learning environments that turn around many lives each school year.



## School Recognition

Schools must submit their calendar, show their assessment and instruction plans, and meet ISBE Quality Assurance guidelines to receive recognition and approval through ROE#1 each year. We make visits to schools throughout the year to ensure they are providing the education called for under state law.

## Truancy Support

Student attendance has a dramatic effect on a child's academic career. We have created a highly effective intervention program to address compulsory school attendance laws in Illinois and help children and families experiencing chronic truancy.

### In FY21, ROE#1

- Administered 140 GED exams for 103 unique testers
- Served 2,685 students through S.A.F.E Schools in Adams County
- Provided a Regional Safe School for 115 students
- Taught 562 students (seven schools) evidence-based substance abuse prevention curriculum through 299 lessons
- Supported 1450 chronically truant children and their families and held 243 truancy hearings
- Supported 706 students experiencing homelessness
- 11 workers permits issued



Homeless Students  
Supported

## Value Add

In addition to regulatory functions, ROE #1 provides early intervention, early literacy and leadership development enrichment programs for the region. These additional value add programs include *Ready, Set, Grow!* – an early literacy initiative, *Team LEAD* and the *West Central Illinois School Leadership Initiative* – both focused on School Leadership, and *Leaders for Life* – a student and staff leadership initiative. We also serve as a sponsor and partner for the *Quincy Conference*, a regional educational conference.

### In FY21, ROE#1

- Received 522 referrals for early intervention support for children birth-three
- Served 257 educators in the West Central Illinois Leadership Initiative, collectively impacting 34,357 students
- Interacted with 13,975 children and their families through *Ready, Set, Grow!* and distributed 11,411 books
- Served 849 testers at testing centers for a range of certification and licensure exams across industries
- 70 educators trained in Leader in Me/7 Habits
- Communicated through 162 website inquiries and 40,743 webpage views
- Fostered 1,080 followers on social media
- 4 schools served through Illinois Empower
- 9 schools served through EIR
- 15 schools served through SEED



Interactions Through  
*Ready, Set, Grow!*

# Regional Needs



## District and Superintendent Needs

ROE#1 Superintendents were recently invited to reflect on their needs and how they have evolved over the years. Their feedback is summarized below. The challenges our Superintendents are facing, and the needs they identified, are at the heart of our priorities for the upcoming year.

### District Challenges and Needs

- **Crisis Management** during COVID has overridden all other priorities for the district
- **Public perception** of educators in general has declined and the need for active communication on social media has increased
- Expanded requirements for data and accountability, and **constantly changing regulations**, have increased the workload for employees across the district
- National **teacher shortage** has presented a challenge in attracting and retaining qualified teachers
- Districts are experiencing an increased need for **social emotional learning** in schools, and a need to address their ability to address emotional and mental health issues
- Districts are experiencing an increased need for technology based education and online instruction

### Top Superintendent Needs

- **Guidance** on ISBE driven issues, financial matters and grant writing and oversight
- **Professional Development, coaching or mentoring** for Superintendents on topics such as time management, collaboration with other superintendents, internal processes, and training for difficult conversations
- Curriculum and Instructional **Design Support**



- **Support recruiting and retaining** qualified teachers
- **Strong communication** of state information and mandates, and advocacy and voice on behalf of districts

## Educator Needs

ROE#1 distributed a Professional Development Survey to all regional educators in the Spring of 2021. 633 respondents identified the following professional development priorities:

- 35% Social Emotional Learning
- 31% Instructional Technology
- 25% Instructional Strategies
- 22% Special Education
- 22% School Culture & Climate
- 21% Data Usage

35%

Social Emotional Learning

31%

Instructional Technology

25%

Instructional Strategies

22%

Special Education

22%

School Culture & Climate

21%

Data Usage

# Financials

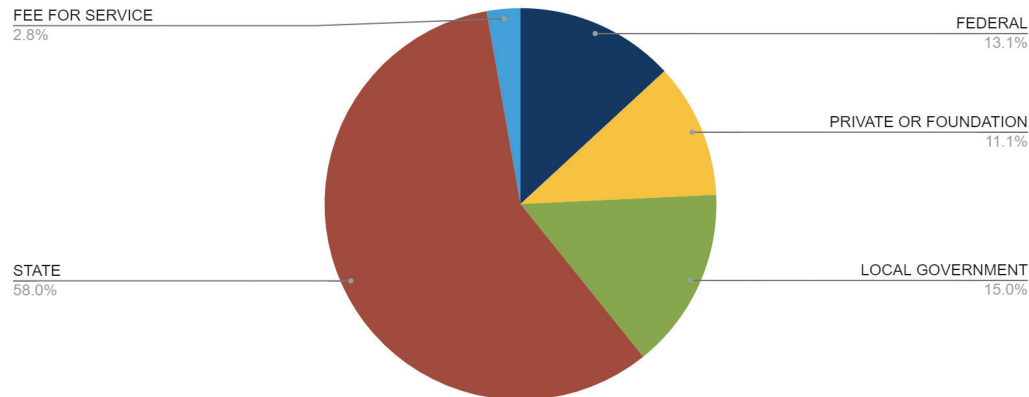
Program	Budget Amount	Funding Source
EIR 10/1/20-9/30/21	\$72,500.00	federal
SEED 10/1/20-9/30/21	\$182,180.00	federal
State Free Lunch & Breakfast--Reimb. Only	\$23.12	federal
Title II-Teacher Quality-Leadership Grant	\$1,323.00	federal
ROPES	\$96,636.00	federal
Elementary and Secondary School Emergency Relief	\$65,789.00	federal
Ready Set Grow - Adams County	\$15,000.00	private / foundation
Ready Set Grow - Expanded	\$7,000.00	private / foundation
Tracy-Ready Set Grow	\$60,000.00	private / foundation
Tracy-Partners to Lead	\$30,000.00	private / foundation
Tracy-NISL-Cohort IV	\$50,988.49	private / foundation
Tracy-NISL-Cohort V	\$91,243.70	private / foundation
Tracy-NISL-Cohort VI	\$88,425.00	private / foundation
Community Foundation	\$11,544.53	private / foundation
General State Aid	\$866,185.91	state
Child and Family Connections	\$494,112.00	state
Homeless	\$48,312.00	state
Truants' Alternative and Optional Education Program	\$183,429.00	state
Regional Safe School Program	\$80,863.00	state
ROE/ISC Operations	\$125,589.00	state
RSSP Cooperative Education Program	\$39,426.00	state
SAFE Program	\$10,000.00	state
SAFE Program	\$40,000.00	local government
County Support	\$362,050.00	local government
Adams County Health Department Contract Tracing	\$75,000	local government
Testing Center	\$8,245.65	fee for service
Institute	\$46,896.14	fee for service
Fingerprinting	\$31,693.00	fee for service
Bus Driver Training	\$1,501.00	fee for service
<b>TOTAL ORGANIZATIONAL BUDGET</b>	<b>\$3,185,955.54</b>	



# FY21 Organizational Budget

(July 1, 2020 – June 30, 2021 unless noted)

FY21 Revenue Distribution



“

Success is our goal  
for all students,  
in all schools,  
in all districts,  
for our entire region.

–ROE #1

”





## Funding Sources/Types

State Funding for direct delivery of the following mandated programs/ services on behalf of the state:

- Health, Life and Safety Services
- Compliance
- Administrators Academy
- Professional Development
- McKinney-Vento Homeless Services

\*County Funding for direct delivery of the following mandated services on behalf of the counties:

- Fingerprinting
- Testing center
- Licensure services
- Bus driver training
- GED
- Workers permit
- Homeschool Registrations



### Statutory Grant Funded Programs

- Regional Safe Schools - Cooperative Education Program (Adams, Pike) (state)
- Regional Safe Schools (Adams, Brown, Cass, Morgan, Scott, Pike) (state)
- Truant Services - Instructional: Lafayette (state)
- Truancy Services - Intervention (state)

### Non-Statutory Grant Funded Programs (value-add)

- Federally funded
  - SEED-Team LEAD (federal research grant)
  - EIR-Team LEAD (federal research grant)
- State funded
  - Child and Family Connections (CFC) (DHS)
  - Regional Office Prevention Education Services (ROPES) (DHS)
  - Workforce Development
  - Title II Educator Evaluation
- County funded
  - S.A.F.E. Schools-Adams County
- Foundation funded
  - Leaders for Life
  - West Central Illinois School Leadership Initiative
  - Ready, Set, Grow!

\*County funds also provide indirect support for the following programs:

- Health, Life and Safety
- Compliance
- Professional Development
- Administrators Academy
- Truancy Services Intervention



# Office Locations

## Quincy

Regional Office of Education  
507 Vermont, Ste. 104  
Quincy, IL 62301  
Phone: 217.277.2080  
Fax: 217.277.2092

## Jacksonville

Regional Office of Education  
409 Hardin Avenue  
Jacksonville, IL 62650  
Phone: 217.243.1804  
Fax: 217.243.5354

## Pittsfield

Regional Office of Education  
39637 260th Avenue  
Pittsfield, IL 62323  
Phone: 217.285.5319  
Fax: 1.217.285.6696

## Virginia

Regional Office of Education  
651 South Morgan, Rm 119  
Virginia, IL 62691  
Phone: 217.452.7329

## Trustees

Name	County	Term Expires
Gerald Robbins	Adams	2023
Gary Brickman	Adams	2021
Van Wilson	Brown	2023
Drew Carls	Cass	2023
Craig Albers	Morgan	2027
Delbert Scranton	Pike	2025
	Scott	2025



Regional Board  
of School Trustees



*Serving Adams, Brown, Cass, Morgan, Pike, and Scott Counties*