

# Regional Office of Education #1



## Annual Report FY22



*Serving Adams, Brown, Cass, Morgan, Pike, and Scott Counties*

# Dear Friends,

As Regional Superintendent of Adams, Brown, Cass, Morgan, Pike, and Scott counties, I am pleased to submit the annual report from July 1, 2021, through June 30, 2022.

This report is an overview of the services and collaborative partnerships engaged in by Regional Office of Education #1. It provides insight into our purpose, programs, and services, as well as summarizing the greatest needs of our educators, principals, and superintendents. The report describes our performance of regulatory functions as directed by Illinois School Code.

On behalf of myself, Julie Stratman, Assistant Regional Superintendent of Schools, and the Regional Office of Education #1 staff; we want to thank you for your continued support and commitment to the students and families in our region.

Sincerely,  
Jill Reis



“ Education is for improving the lives of others and for leaving your community and world better than you found it. ”

-Miriam Wright Edelman



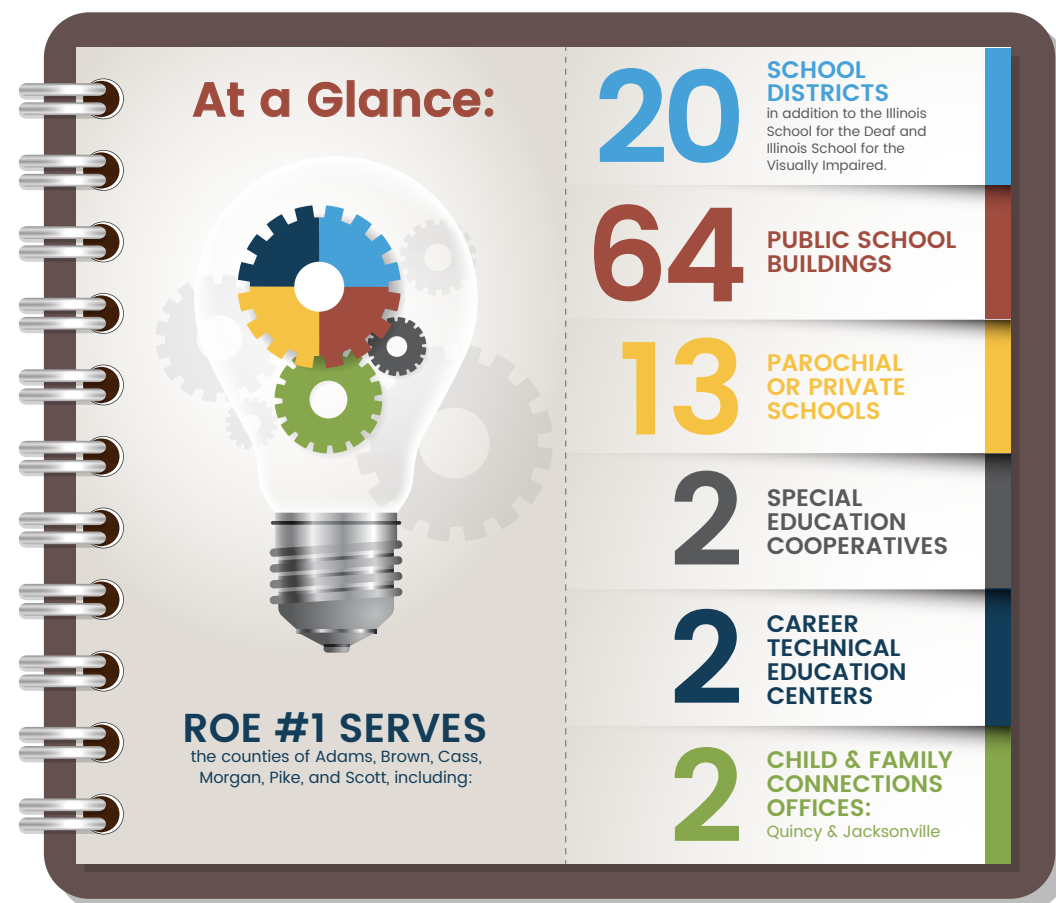


# Organization Identity

## What We Do

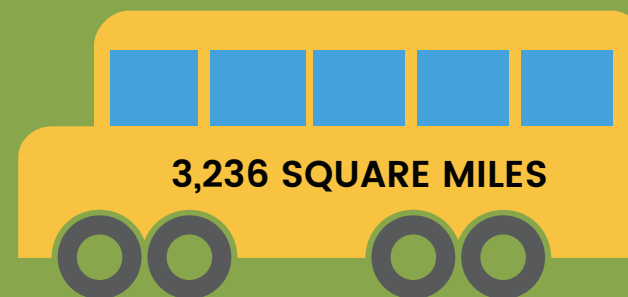
The Regional Office of Education #1 (ROE#1) is an essential support office partnering with the Illinois State Board of Education (ISBE) to support local school districts. ROE#1 provides positive leadership and serves as a source of information for educators, school districts, and the public. We keep students and school buildings safe, handle legal issues such as consolidations, and ensure education in the classroom meets state standards. We work together with our schools to provide the best education possible for students in West Central Illinois.

Working collaboratively with the County Boards, the Regional Superintendent works throughout the region to ensure that all children receive an education in a safe, supportive, and successful environment. The Regional Superintendent of Schools is elected by their counties to serve as the chief administrative officer of the region. ROE#1 has a board whose purpose is to oversee and make decisions regarding school district boundary changes through an annexation and detachment process.



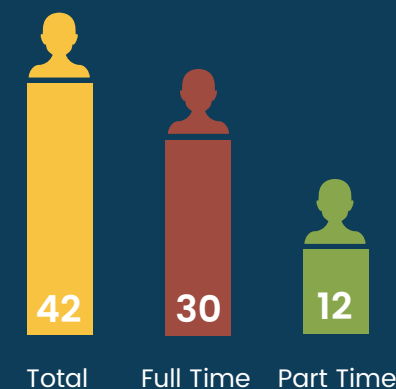
## ROE#1 IS THE FOURTH LARGEST

Regional Office of Education in geographic size out of 35 Regional Offices in Illinois covering...



## ROE#1 OPERATES

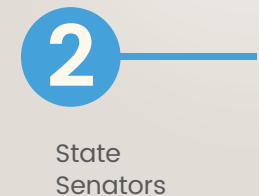
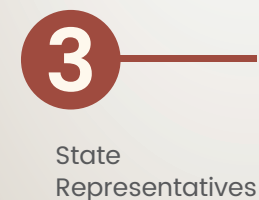
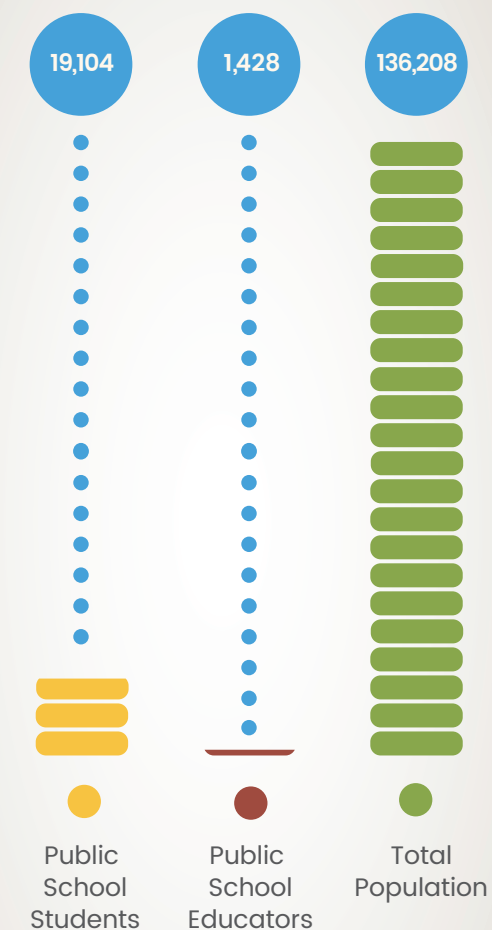
four office sites throughout Illinois, located in Quincy, Jacksonville, Pittsfield, and Virginia, and employs...



## ROE#1 OVERSEES

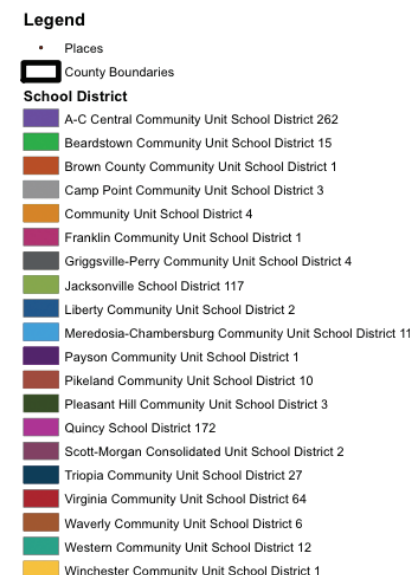
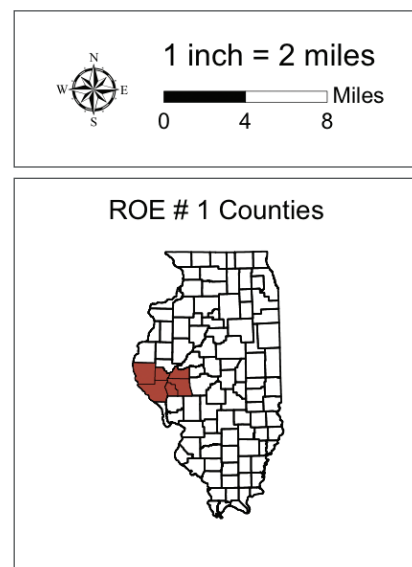
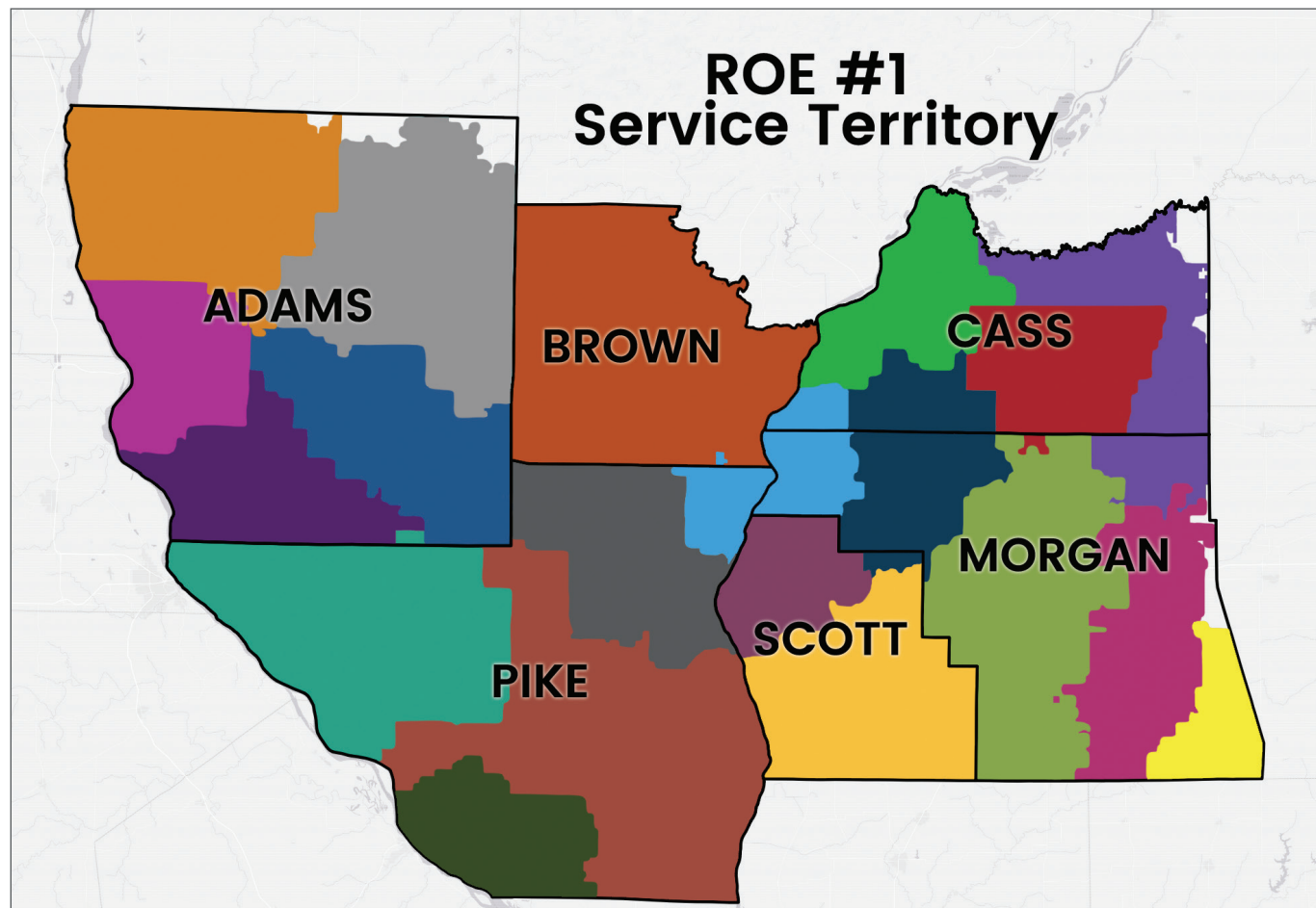
operations for four Regional Safe Schools in Illinois, located in Quincy (2), Pittsfield, and Jacksonville

## ROE#1 SERVES



# Service Territory

# Programs & Services



The Regional Superintendent acts as an advocate for education by providing positive leadership and disseminating information for educators, school districts and the public. As part of its partnership with the Illinois State Board of Education, ROE#1 performs regulatory functions as directed by the Illinois School Code to provide safety, support, and success to local school districts.

## Safety

Safety is a premier objective of ROE#1. We support the safety in our schools by providing these shared services.

## Health Life Safety

We inspect each of our region's 73 public school and school-related buildings annually to ensure they meet health and safety standards under state law. When schools remodel or build new buildings, or use temporary classroom units, we are there to ensure adherence to safety protocols for students and teachers.

## Bus Safety

Our bus safety training is required for all new drivers before they get behind the wheel, and for any drivers renewing their permits each year. We keep students safe to and from school through an eight-hour course for new drivers and two-hour refresher course for those who already have been on the roads. We also conduct a four hour Entry Level Driver Training (ELDT) for every new bus driver.

## Background Checks

School children must be protected in the classroom. Our offices make sure every educator is fingerprinted and has a background check before they ever enter the classroom.

## In FY22 ROE#1

- Inspected 73 public school buildings and issued 10 building permits
- Trained 81 first-time bus drivers and provided a refresher course for 369 current bus drivers
- Fingerprinted 809 Educators

809

Educators  
Fingerprinted

Support

Support of our schools is one way we work collaboratively with our districts, schools, parents, and communities.

Licensure

Our offices make sure teachers are ready for the classroom. We issue, register, and monitor educator licenses for teachers, administrators, substitutes, and paraprofessionals. Every educator in a school can work with a ROE#1 member to renew their credentials.

Professional Development

ROE#1 is a provider of high quality professional development throughout the region. Our staff works tirelessly to provide educator trainings, conferences, networking opportunities, and assistance throughout the year to enhance skills and provide support for continuous school improvement. Our professional development emphasis keeps teachers up-to-date with instructional best practices and offers a collaborative partnership to problem solve and meet students' needs within the classroom.

Compliance

Schools work with our offices to ensure they are meeting state and federal guidelines and standards. Our systematic review results are part of the Illinois Report Card, and they serve to improve operations and support top-quality programs for student educational experiences.

In FY22 ROE#1

- 2,764 active PEL, 775 active para licenses registered
- 120 new substitue licenses issued
- Held 107 professional development sessions for 1,447 educators
- Held 6 workshops for 43 administrators through the Administrator Academy
- Evaluated 5 districts for compliance, and 15 districts for mini-compliance

Success

Success is our goal for all students, in all schools, in all districts, for our entire region.

High School Equivalency

For students who do not complete high school, an alternative path is available through the GED or High School Equivalency Certificate. Individuals pursuing their GED can take coursework at John Wood Community College or Lincoln Land Community College and complete their testing at the ROE#1 testing center. We issue certificates to those individuals who successfully pass their exam.

Safe School Programs

Students who are suspended/expelled from their schools can receive needed support through our Safe School programs. We meet the specific needs of disruptive students by providing individual attention in alternative learning environments that turn around many lives each school year.

School Recognition

Schools must submit their calendar, show their assessment and instruction plans, and meet ISBE Quality Assurance guidelines to receive recognition and approval through ROE#1 each year. We make visits to schools throughout the year to ensure they are providing the education called for under state law.

Truancy Support

Student attendance has a dramatic effect on a child's academic career. We have created a highly effective intervention program to address compulsory school attendance laws in Illinois and help children and families experiencing chronic truancy.

In FY22, ROE#1

- Administered 196 GED exams for 103 unique testers
- Provided a Regional Safe School for 115 students
- Taught 999 students (seven schools) evidence-based substance abuse prevention curriculum through 282 lessons
- Supported 1,393 chronically truant children and their families and held 170 truancy hearings
- Supported 843 students experiencing homelessness
- 17 workers permits issued

Value Add

In addition to regulatory functions, ROE #1 provides early intervention, early literacy and leadership development enrichment programs for the region. These additional value add programs include *Ready, Set, Grow!* – an early literacy initiative, *Team LEAD* and the *West Central Illinois School Leadership Initiative* – both focused on School Leadership, and *Leaders for Life* – a student and staff leadership initiative. We also serve as a sponsor and partner for the *Quincy Conference*, a regional educational conference.

In FY22, ROE#1

- Received 715 referrals for early intervention support for children birth-three
- Served 172 educators in the West Central Illinois Leadership Initiative, collectively impacting 20,700 students
- Interacted with 8,745 children and their families through *Ready,Set, Grow!* and distributed 11,865 books
- Served 1,049 testers at testing centers for a range of certification and licensure exams across industries
- 72 educators trained in Leader in Me/7 Habits
- Communicated through 225 website inquiries and 62,803 webpage views
- Fostered 2,116 followers on social media
- 1 school served through Illinois Empower
- 9 schools served through EIR
- 15 schools served through SEED

843

Homeless Students Supported

8,745

Interactions Through Ready, Set, Grow!

3,539

Educators Registered



# Regional Needs



## District and Superintendent Needs

ROE#1 Superintendents were recently invited to reflect on their needs and how they have evolved over the years. Their feedback is summarized below. The challenges our Superintendents are facing, and the needs they identified, are at the heart of our priorities for the upcoming year.

### District Challenges and Needs

- **Public perception** of educators in general has declined and the need for active communication on social media has increased
- Expanded requirements for data and accountability, and **constantly changing regulations**, have increased the workload for employees across the district
- National **teacher shortage** has presented a challenge in attracting and retaining qualified teachers
- Districts are experiencing an increased need for **social emotional learning** in schools, and a need to address their ability to address emotional and mental health issues

### Top Superintendent Needs

- **Guidance** on ISBE driven issues and financial matters
- **Professional Development** for leadership, school law and multi-tiered systems of support for students
- Curriculum and Instructional **Design Support** and using data to inform instruction
- **Support recruiting and retaining** qualified teachers
- **Strong communication** of state information and mandates, and advocacy and voice on behalf of districts



## Educator Needs

ROE#1 distributed a Professional Development Survey to all regional educators in the Spring of 2022. 303 respondents identified the following professional development priorities:

- 40% Social Emotional Learning
- 31% Classroom Management
- 27% School Culture & Climate
- 26% Trauma
- 25% Instructional Strategies

40%

Social Emotional Learning

31%

Classroom Management

27%

School Culture & Climate

26%

Trauma

25%

Instructional Strategies



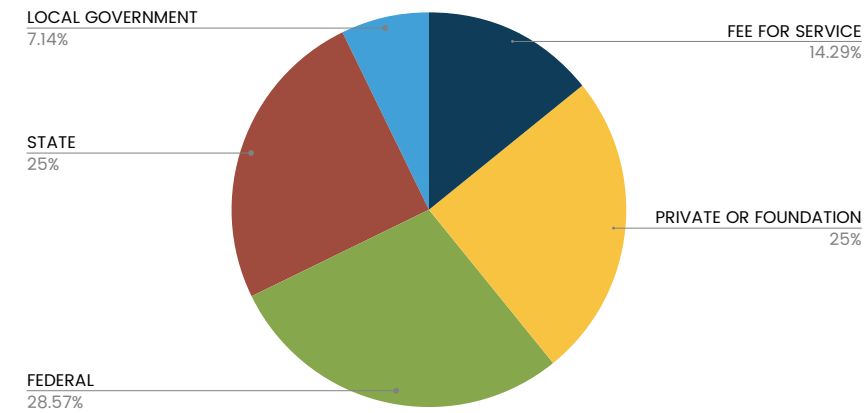
# Financials

Program	Budget Amount	Funding Source
EIR 10/1/21-9/30/22	\$60,000.00	federal
SEED 10/1/21-9/30/22	\$69,900.00	federal
McKinney Vento-American Rescue Plan	\$15,146.00	federal
ROPES	\$96,636.00	federal
Elementary and Secondary School Emergency Relief II	\$8,749.00	federal
Elementary and Secondary Relief-Digital Equity	\$26,638.00	federal
Area III Social and Emotional Learning/Wellness	\$857,143.00	federal
Workforce Development	\$67,000.00	federal
Ready Set Grow - Adams County	\$7,500.00	private / foundation
Ready Set Grow - Expanded	\$5,292.00	private / foundation
Tracy-Ready Set Grow	\$45,000.00	private / foundation
Tracy-Partners to Lead	\$30,000.00	private / foundation
Tracy-NISL-Cohort V	\$80,000.00	private / foundation
Tracy-NISL-Cohort VI	\$54,000.00	private / foundation
Community Foundation	\$4,250.00	private / foundation
General State Aid	\$958,883.10	state
Child and Family Connections	\$520,392.00	state
Homeless	\$35,922.00	state
Truants' Alternative and Optional Education Program	\$183,429.00	state
Regional Safe School Program	\$80,302.00	state
ROE/ISC Operations	\$125,559.00	state
SAFE Program	\$10,000.00	state
SAFE Program	\$40,000.00	local government
County Support	\$362,050.00	local government
Testing Center	\$9,945.64	fee for service
Institute	\$46,396.11	fee for service
Fingerprinting	\$19,946.75	fee for service
Bus Driver Training	\$1,551.00	fee for service
<b>TOTAL ORGANIZATIONAL BUDGET</b>	<b>\$3,816,338.60</b>	

## FY22 Organizational Budget

(July 1, 2021 - June 30, 2022 unless noted)

FY22 Revenue Distribution



“

Success is our goal  
for all students,  
in all schools,  
in all districts,  
for our entire region.  
-ROE #1

”

**ROE**  
Regional Office of Education #1



## Funding Sources/Types

State Funding for direct delivery of the following mandated programs/ services on behalf of the state:

- Health, Life and Safety Services
- Compliance
- Administrators Academy
- Professional Development
- McKinney-Vento Homeless Services

\*County Funding for direct delivery of the following mandated services on behalf of the counties:

- Fingerprinting
- Testing center
- Licensure services
- Bus driver training
- GED
- Workers permit
- Homeschool Registrations



### Statutory Grant Funded Programs

- Regional Safe Schools (Adams, Brown, Cass, Morgan, Pike, Scott) (state)
- Truant Services - Instructional: Lafayette (state)
- Truancy Services - Intervention (state)

### Non-Statutory Grant Funded Programs (value-add)

- Federally funded
  - SEED (Supporting Effective Educator Development)-Team LEAD (federal research grant)
  - EIR (Education Innovation and Research)-Team LEAD (federal research grant)
  - Workforce Development
  - Social and Emotional Learning and Trauma Response
- State funded
  - Child and Family Connections (CFC) (DHS)
  - Regional Office Prevention Education Services (ROPES) (DHS)
  - Title II Educator Evaluation
- County funded
  - S.A.F.E. Schools-Adams County
- Foundation funded
  - Leaders for Life
  - West Central Illinois School Leadership Initiative
  - Ready, Set, Grow!

\*County funds also provide indirect support for the following programs:

- Health, Life and Safety
- Compliance
- Professional Development
- Administrators Academy
- Truancy Services Intervention



# Office Locations

## Quincy

Regional Office of Education  
507 Vermont, Ste. 104  
Quincy, IL 62301  
Phone: 217.277.2080  
Fax: 217.277.2092

## Jacksonville

Regional Office of Education  
409 Hardin Avenue, Ste. 303  
Jacksonville, IL 62650  
Phone: 217.243.1804  
Fax: 217.243.5354

## Pittsfield

Regional Office of Education  
39637 260th Avenue  
Pittsfield, IL 62323  
Phone: 217.285.5319  
Fax: 1.217.285.6696

## Virginia

Regional Office of Education  
651 South Morgan, Rm 119  
Virginia, IL 62691  
Phone: 217.452.7329

## Trustees

Name	County	Term Expires
	Adams	2023
Gary Brickman	Adams	2027
Van Wilson	Brown	2023
Drew Carls	Cass	2023
Craig Albers	Morgan	2027
	Pike	2025
	Scott	2025



Regional Board  
of School Trustees



*Serving Adams, Brown, Cass, Morgan, Pike, and Scott Counties*