

# Regional Office of Education #1



## Annual Report FY23



*Serving Adams, Brown, Cass, Morgan, Pike, and Scott Counties*



# Dear Friends,

As Regional Superintendent of Adams, Brown, Cass, Morgan, Pike, and Scott counties, I am pleased to submit the annual report from July 1, 2022, through June 30, 2023.

This report is an overview of the services and collaborative partnerships engaged in by Regional Office of Education #1. It provides insight into our purpose, programs, and services, as well as summarizing the greatest needs of our educators, principals, and superintendents. The report describes our performance of regulatory functions as directed by Illinois School Code.

On behalf of myself, Julie Stratman, Assistant Regional Superintendent of Schools, and the Regional Office of Education #1 staff; we want to thank you for your continued support and commitment to the students and families in our region.

Sincerely,  
Jill Reis



“ Education is for improving the lives of others and for leaving your community and world better than you found it. ”

-Miriam Wright Edelman

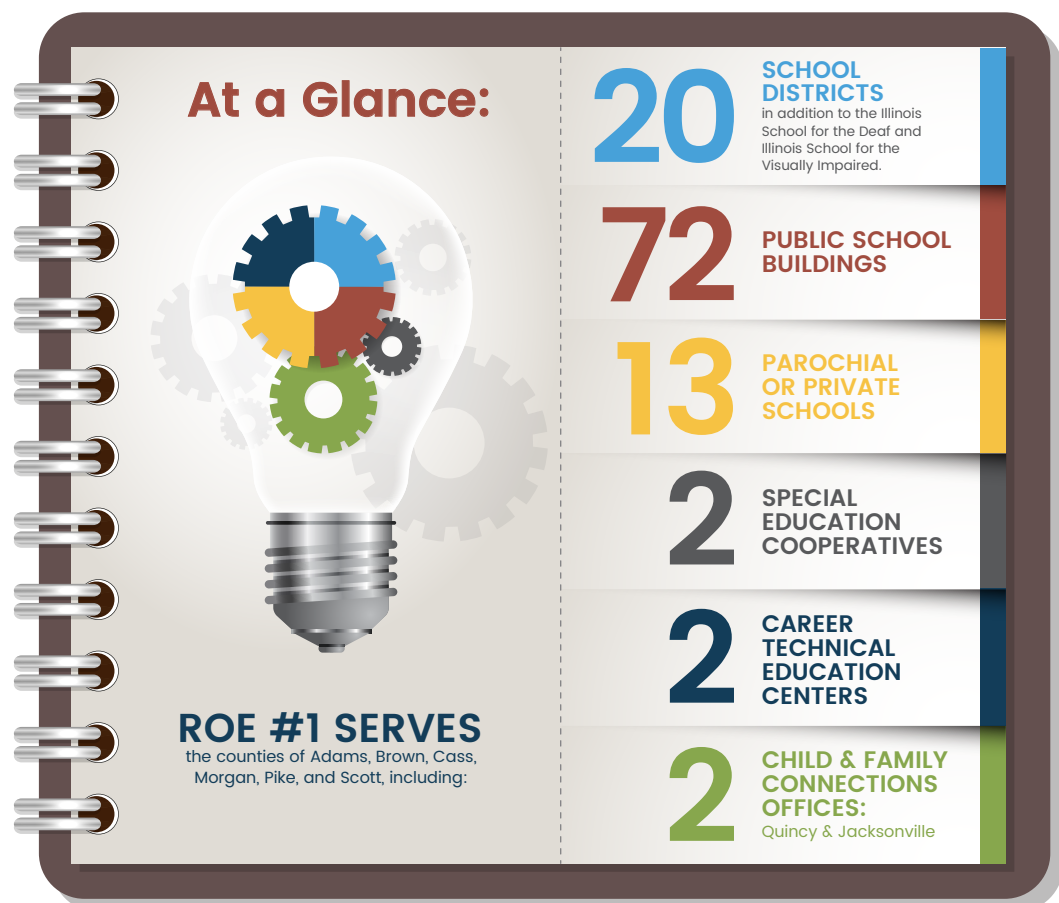


# Organization Identity

## What We Do

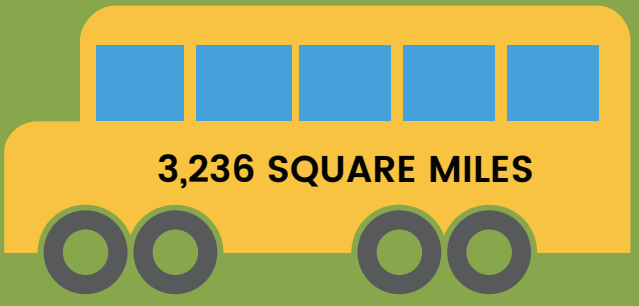
The Regional Office of Education #1 (ROE#1) is an essential support office partnering with the Illinois State Board of Education (ISBE) to support local school districts. ROE#1 provides positive leadership and serves as a source of information for educators, school districts, and the public. We keep students and school buildings safe, handle legal issues such as consolidations, and ensure education in the classroom meets state standards. We work together with our schools to provide the best education possible for students in West Central Illinois.

Working collaboratively with the County Boards, the Regional Superintendent works throughout the region to ensure that all children receive an education in a safe, supportive, and successful environment. The Regional Superintendent of Schools is elected by their counties to serve as the chief administrative officer of the region. ROE#1 has a board whose purpose is to oversee and make decisions regarding school district boundary changes through an annexation and detachment process.



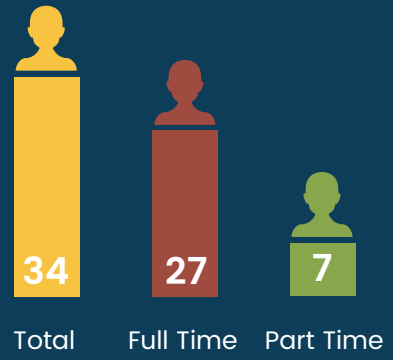


**ROE#1 IS THE FOURTH LARGEST**  
Regional Office of Education in geographic size  
out of 35 Regional Offices in Illinois covering...



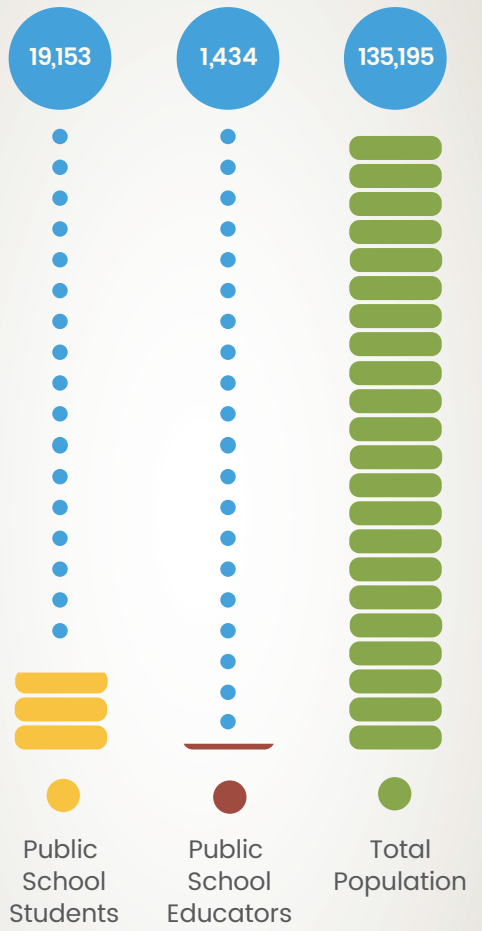
**ROE#1 OPERATES**

four office sites throughout Illinois, located in Quincy, Jacksonville, Pittsfield, and Virginia, and employs...



**ROE#1 OVERSEES**  
operations for four Regional Safe Schools in Illinois, located in Quincy (2), Pittsfield, and Jacksonville

**ROE#1 SERVES**



State Representatives



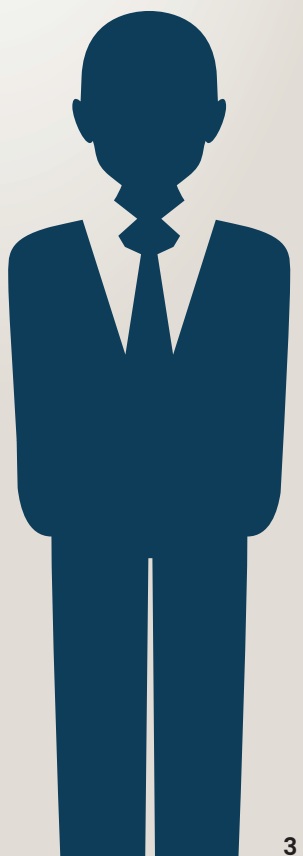
State Senators



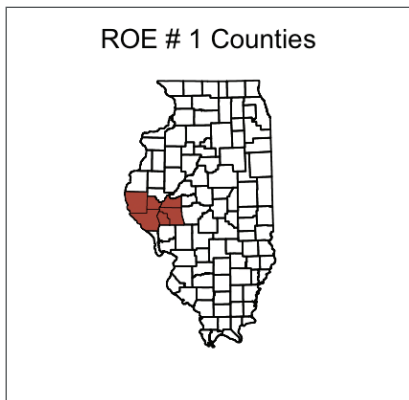
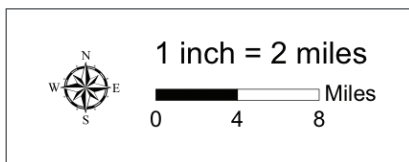
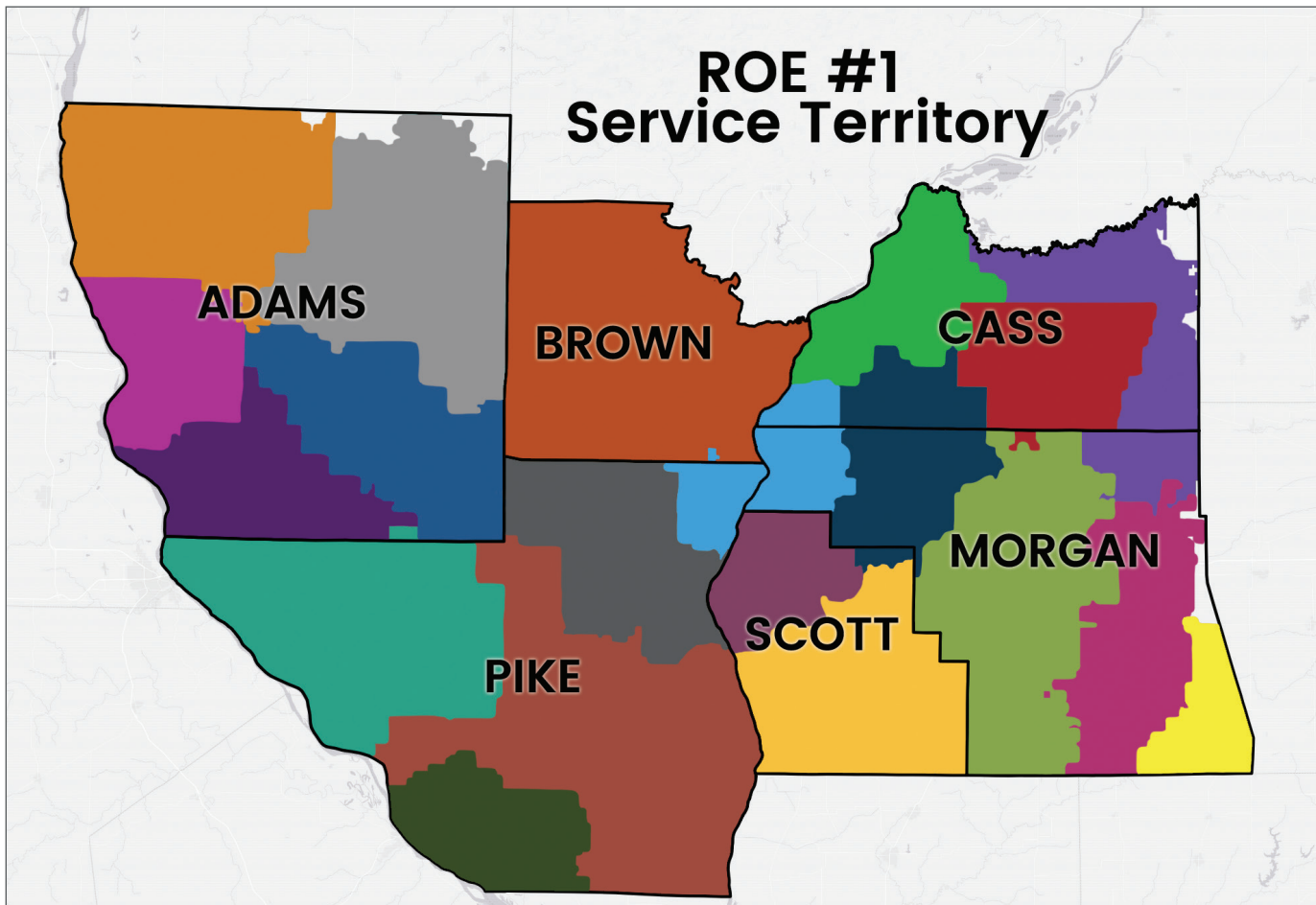
United States Senator



Congressman



# Service Territory



- Legend**
- Places
  - ▭ County Boundaries
  - School District**
  - ▭ A-C Central Community Unit School District 262
  - ▭ Beardstown Community Unit School District 15
  - ▭ Brown County Community Unit School District 1
  - ▭ Camp Point Community Unit School District 3
  - ▭ Community Unit School District 4
  - ▭ Franklin Community Unit School District 1
  - ▭ Griggsville-Perry Community Unit School District 4
  - ▭ Jacksonville School District 117
  - ▭ Liberty Community Unit School District 2
  - ▭ Meredosia-Chambersburg Community Unit School District 11
  - ▭ Payson Community Unit School District 1
  - ▭ Pikeland Community Unit School District 10
  - ▭ Pleasant Hill Community Unit School District 3
  - ▭ Quincy School District 172
  - ▭ Scott-Morgan Consolidated Unit School District 2
  - ▭ Triopia Community Unit School District 27
  - ▭ Virginia Community Unit School District 64
  - ▭ Waverly Community Unit School District 6
  - ▭ Western Community Unit School District 12
  - ▭ Winchester Community Unit School District 1

# Programs & Services

The Regional Superintendent acts as an advocate for education by providing positive leadership and disseminating information for educators, school districts and the public. As part of its partnership with the Illinois State Board of Education, ROE#1 performs regulatory functions as directed by the Illinois School Code to provide safety, support, and success to local school districts.

## Safety

Safety is a premier objective of ROE#1. We support the safety in our schools by providing these shared services.

### Health Life Safety

We inspect each of our region's 72 public school and school-related buildings annually to ensure they meet health and safety standards under state law. When schools remodel or build new buildings, or use temporary classroom units, we are there to ensure adherence to safety protocols for students and teachers.

### Bus Safety

Our bus safety training is required for all new drivers before they get behind the wheel, and for any drivers renewing their permits each year. We keep students safe to and from school through an eight-hour course for new drivers and two-hour refresher course for those who already have been on the roads. We also conduct a four hour Entry Level Driver Training (ELDT) for every new bus driver.

### Background Checks

School children must be protected in the classroom. Our offices make sure every educator is fingerprinted and has a background check before they ever enter the classroom.

### In FY23 ROE#1

- Inspected 72 public school buildings and issued 14 building permits
- Trained 92 first-time bus drivers and provided a refresher course for 381 current bus drivers
- Fingerprinted 1,036 Educators



1,036

Educators  
Fingerprinted



## Support

Support of our schools is one way we work collaboratively with our districts, schools, parents, and communities.

## Licensure

Our offices make sure teachers are ready for the classroom. We issue, register, and monitor educator licenses for teachers, administrators, substitutes, and paraprofessionals. Every educator in a school can work with a ROE#1 member to renew their credentials.

## Professional Development

ROE#1 is a provider of high quality professional development throughout the region. Our staff works tirelessly to provide educator trainings, conferences, networking opportunities, and assistance throughout the year to enhance skills and provide support for continuous school improvement. Our professional development emphasis keeps teachers up-to-date with instructional best practices and offers a collaborative partnership to problem solve and meet students' needs within the classroom.

## Compliance

Schools work with our offices to ensure they are meeting state and federal guidelines and standards. Our systematic review results are part of the Illinois Report Card, and they serve to improve operations and support top-quality programs for student educational experiences.



Educators Registered

## In FY23 ROE#1

- 2,390 active PEL, 728 active para licenses registered
- 206 new substitute licenses issued
- Held 87 professional development sessions for 1,071 educators
- Held 7 workshops for 95 administrators through the Administrator Academy
- Evaluated 6 districts for full compliance, and 20 districts for mini-compliance

## Success

Success is our goal for all students, in all schools, in all districts, for our entire region.

## High School Equivalency

For students who do not complete high school, an alternative path is available through the GED or High School Equivalency Certificate. Individuals pursuing their GED can take coursework at John Wood Community College or Lincoln Land Community College and complete their testing at the ROE#1 testing center. We issue certificates to those individuals who successfully pass their exam.

## Safe School Programs

Students who are suspended/expelled from their schools can receive needed support through our Safe School programs. We meet the specific needs of disruptive students by providing individual attention in alternative learning environments that turn around many lives each school year.



## School Recognition

Schools must submit their calendar, show their assessment and instruction plans, and meet ISBE Quality Assurance guidelines to receive recognition and approval through ROE#1 each year. We make visits to schools throughout the year to ensure they are providing the education called for under state law.

## Truancy Support

Student attendance has a dramatic effect on a child's academic career. We have created a highly effective intervention program to address compulsory school attendance laws in Illinois and help children and families experiencing chronic truancy.

### In FY23, ROE#1

- Administered 186 GED exams for 103 unique testers
- Provided a Regional Safe School for 96 students
- Taught 1,894 students (seven schools) evidence-based substance abuse prevention curriculum through 271 lessons
- Supported 1,719 chronically truant children and their families and held 225 truancy hearings
- Supported 445 students experiencing housing insecurities
- 16 workers permits issued

## Value Add

In addition to regulatory functions, ROE #1 provides early intervention, early literacy and leadership development enrichment programs for the region. These additional value add programs include *Ready, Set, Grow!* – an early literacy initiative, *Team LEAD* and the *West Central Illinois School Leadership Initiative* – both focused on School Leadership, and *Leaders for Life* – a student and staff leadership initiative. We also serve as a sponsor and partner for the *Quincy Conference*, a regional educational conference.

### In FY23, ROE#1

- Received 364 referrals for early intervention support for children birth-three
- Served 648 educators in the West Central Illinois Leadership Initiative, collectively impacting 70,804 students
- Interacted with 2,676 children and their families through *Ready, Set, Grow!* and distributed 4,912 books
- Served 1,064 testers at testing centers for a range of certification and licensure exams across industries
- 140 educators trained in Leader in Me/7 Habits
- Communicated through 302 website inquiries and 71,084 webpage views
- 76 new followers on social media
- 12 schools served through EIR
- 11 schools served through SEED



843

Homeless Students Supported



2,676

Interactions Through  
*Ready, Set, Grow!*



# Regional Needs



## District and Superintendent Needs

ROE#1 Superintendents were recently invited to reflect on their needs and how they have evolved over the years. Their feedback is summarized below. The challenges our Superintendents are facing, and the needs they identified, are at the heart of our priorities for the upcoming year.



## District Challenges and Needs

- **Public perception** of educators in general has declined and the need for active communication on social media has increased
- Expanded requirements for data and accountability, and **constantly changing regulations**, have increased the workload for employees across the district
- National **teacher shortage** has presented a challenge in attracting and retaining qualified teachers
- Districts are experiencing an increased need for **social emotional learning** in schools, and a need to address their ability to address emotional and mental health issues



## Top Superintendent Needs

- **Guidance** on ISBE driven issues and financial matters
- **Professional Development** for leadership, school law, social emotional training/trauma, and multi-tiered systems of support for students
- Curriculum and Instructional **Design Support** and using data to inform instruction
- **Support recruiting and retaining** qualified teachers
- **Strong communication** of state information and mandates, and advocacy and voice on behalf of districts
- Creating safe schools for students and staff



## Educator Needs

ROE#1 distributed a Professional Development Survey to all regional educators in the Spring of 2023. 457 respondents identified the following professional development priorities:

- 44% Google Classroom
- 36% Motivating Reluctant Learners
- 33% Classroom Management
- 32% Google Forms
- 31% Utilizing Web-based Programs for Instruction

**44%**

Google  
Classroom

**36%**

Motivating  
Reluctant  
Learners

**33%**

Classroom  
Management

**32%**

Google Forms

**31%**

Utilizing  
Web-based  
Programs  
for Instruction

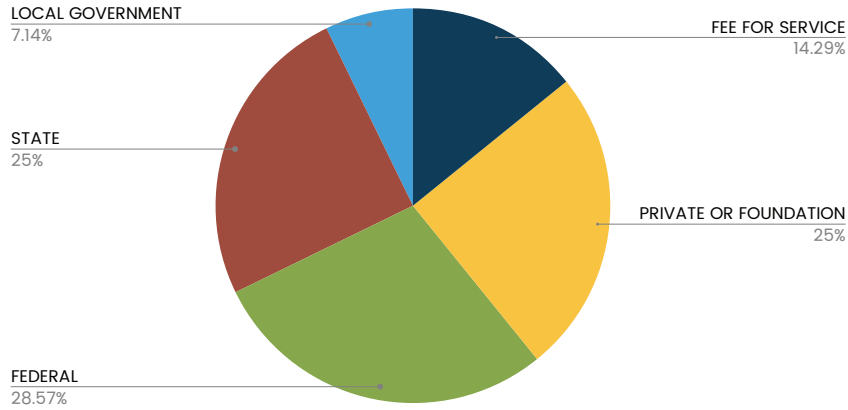
# Financials

Program	Budget Amount	Funding Source
EIR 10/1/21-9/30/22	\$17,906.00	federal
SEED 10/1/21-9/30/22	\$69,900.00	federal
McKinney Vento-American Rescue Plan	\$52,463.00	federal
ROPES	\$96,636.00	federal
Elementary and Secondary School Emergency Relief III	\$114,926.00	federal
Elementary and Secondary Relief-Digital Equity	\$26,638.00	federal
Area III Social and Emotional Learning/Wellness	\$857,143.00	federal
Workforce Development	\$65,279.42	federal
Ready Set Grow - Adams County	\$9,398.85	private / foundation
Ready Set Grow - Expanded	\$35,892.00	private / foundation
Tracy-Ready Set Grow	\$55,000.00	private / foundation
Tracy-Partners to Lead	\$4,497.30	private / foundation
Tracy-NISL-Cohort V	\$74,124.03	private / foundation
Tracy-NISL-Cohort VI	\$72,347.48	private / foundation
Community Foundation	\$5,000.00	private / foundation
General State Aid	\$1,007,312.28	state
Child and Family Connections	\$521,368.00	state
Homeless	\$26,200.00	state
Truants' Alternative and Optional Education Program	\$179,046.00	state
Regional Safe School Program	\$81,608.00	state
ROE/ISC Operations	\$342,487.00	state
SAFE Program	\$10,000.00	state
SAFE Program	\$40,000.00	local government
County Support	\$369,291.00	local government
Testing Center	\$8,358.03	fee for service
Institute	\$47,110.57	fee for service
Fingerprinting	\$36,244.50	fee for service
Bus Driver Training	\$1,551.00	fee for service
<b>TOTAL ORGANIZATIONAL BUDGET</b>	<b>\$4,227,727.46</b>	

# FY22 Organizational Budget

(July 1, 2021 - June 30, 2022 unless noted)

## FY22 Revenue Distribution



“

Success is our goal  
for all students,  
in all schools,  
in all districts,  
for our entire region.

-ROE #1

”



## Funding Sources/Types

State Funding for direct delivery of the following mandated programs/ services on behalf of the state:

- Health, Life and Safety Services
- Compliance
- Administrators Academy
- Professional Development
- McKinney-Vento Homeless Services (federal)

\*County Funding for direct delivery of the following mandated services on behalf of the counties:

- Fingerprinting
- Testing center
- Licensure services
- Bus driver training
- GED
- Workers permit
- Homeschool Registrations



### Statutory Grant Funded Programs

- Regional Safe Schools (Adams, Brown, Cass, Morgan, Pike, Scott) (state)
- Truant Services - Instructional: Lafayette (state)
- Truancy Services - Intervention (state)

### Non-Statutory Grant Funded Programs (value-add)

- Federally funded
  - SEED (Supporting Effective Educator Development)-Team LEAD (federal research grant)
  - EIR (Education Innovation and Research)-Team LEAD (federal research grant)
  - Workforce Development
  - Social and Emotional Learning and Trauma Response
- State funded
  - Child and Family Connections (CFC) (DHS)
  - Regional Office Prevention Education Services (ROPES) (DHS)
- County funded
  - S.A.F.E. Schools-Adams County
- Foundation funded
  - Leaders for Life
  - West Central Illinois School Leadership Initiative
  - Ready, Set, Grow!

\*County funds also provide indirect support for the following programs:

- Health, Life and Safety
- Compliance
- Professional Development
- Administrators Academy
- Truancy Services Intervention



# Office Locations

## Quincy

Regional Office of Education  
507 Vermont, Ste. 104  
Quincy, IL 62301  
Phone: 217.277.2080  
Fax: 217.277.2092

## Jacksonville

Regional Office of Education  
409 Hardin Avenue, Ste. 303  
Jacksonville, IL 62650  
Phone: 217.243.1804  
Fax: 217.243.5354

## Pittsfield

Regional Office of Education  
39637 260th Avenue  
Pittsfield, IL 62323  
Phone: 217.285.5319  
Fax: 1.217.285.6696

## Virginia

Regional Office of Education  
651 South Morgan, Rm 119  
Virginia, IL 62691  
Phone: 217.452.7329

## Trustees

Name	County	Term Expires
	Adams	2023
Gary Brickman	Adams	2027
Van Wilson	Brown	2023
Drew Carls	Cass	2023
Craig Albers	Morgan	2027
	Pike	2025
	Scott	2025



Regional Board  
of School Trustees



*Serving Adams, Brown, Cass, Morgan, Pike, and Scott Counties*